



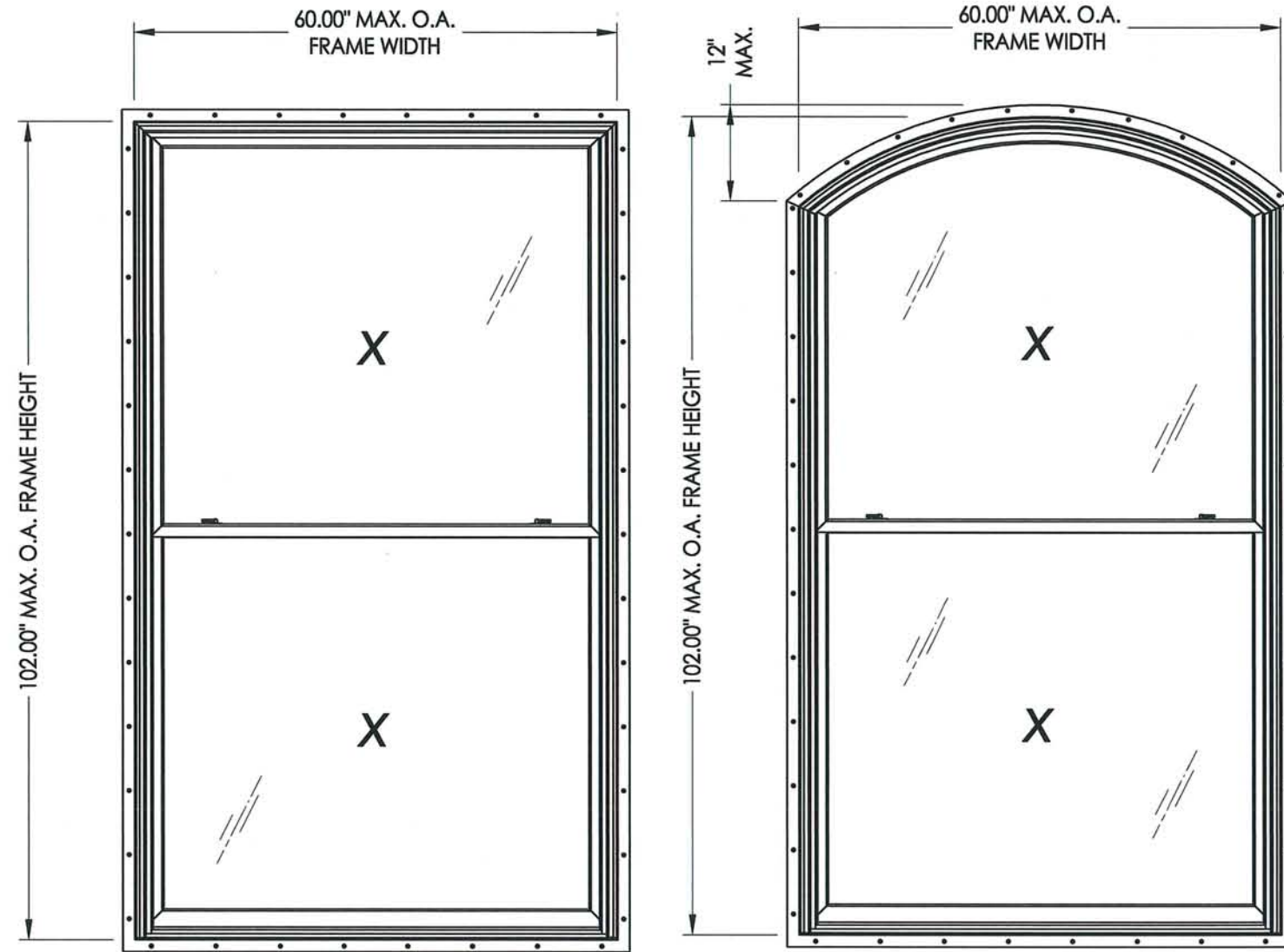
2045 Kerper Blvd., Dubuque, IA 52004-1072

**SERIES T-7
CLAD TALON DOUBLE HUNG VENT
ALUMINUM CLAD WOOD WINDOW
"NON-IMPACT"**

GENERAL NOTES

1. This product has been evaluated and is in compliance with the 2007 Florida Building Code (FBC) structural requirements excluding the "High Velocity Hurricane Zone" (HVHZ).
2. Product anchors shall be as listed and spaced as shown on details. Anchor embedment to base material shall be beyond wall dressing or stucco.
3. When used in areas requiring wind borne debris protection this product is required to be protected with an impact resistant covering that complies with Section 1609.1.2 of the FBC.
4. For 2x stud construction, the length of all anchors shall be increased an amount equal to the thickness of any sheathing or wall coverings such that penetration of the anchor into the stud shall be no less than that shown in the masonry 2x buck installation in this drawing.
5. Site conditions that deviate from the details of this drawing require further engineering analysis by a licensed engineer or registered architect.

TABLE OF CONTENTS	
SHEET #	DESCRIPTION
1	Typical elevations, design pressures & general notes
2	Glazing details
3	Vertical & horizontal cross sections
4	Buck & frame anchoring
5	Components
6	Bill of materials & components



OVERALL FIN DIMENSION	OVERALL FRAME DIMENSION	MAX D.L.O. DIMENSION	GLASS TYPE	DESIGN PRESSURE (PSF)	
				POS.	NEG.
43.00" X 81.00"	40.00" X 78.00"	33.00" X 34.00"	G1	+55.00	-55.00
63.00" X 105.00"	60.00" X 102.00"	53.00" X 46.00"	G2	+30.00	-30.00
51.00" X 75.00"	48.00" X 72.00"	41.00" X 31.00"		+55.00	-55.00
43.00" X 87.00"	40.00" X 84.00"	33.00" X 37.00"		+55.00	-55.00
43.00" X 75.00"	40.00" X 72.00"	33.00" X 31.00"		+55.00	-55.00
47.00" X 81.00"	44.00" X 78.00"	37.00" X 34.00"		+55.00	-55.00

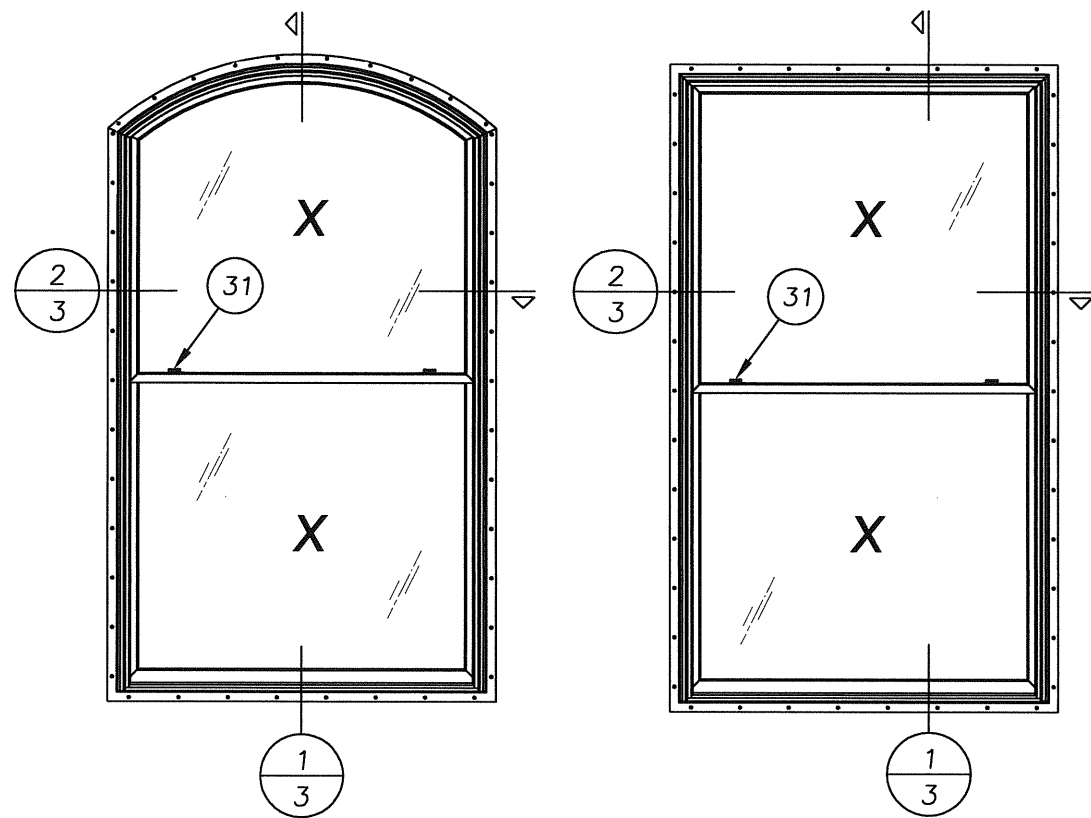
Documents Prepared By:

RW BUILDING CONSULTANTS, INC.
P.O. Box 230 Vairico FL 33595
Phone No.: 813.659.9197
Florida Board of Professional Engineers
Certificate Of Authorization No. 9813
Wendell W. Haney, P.E. No. 54158

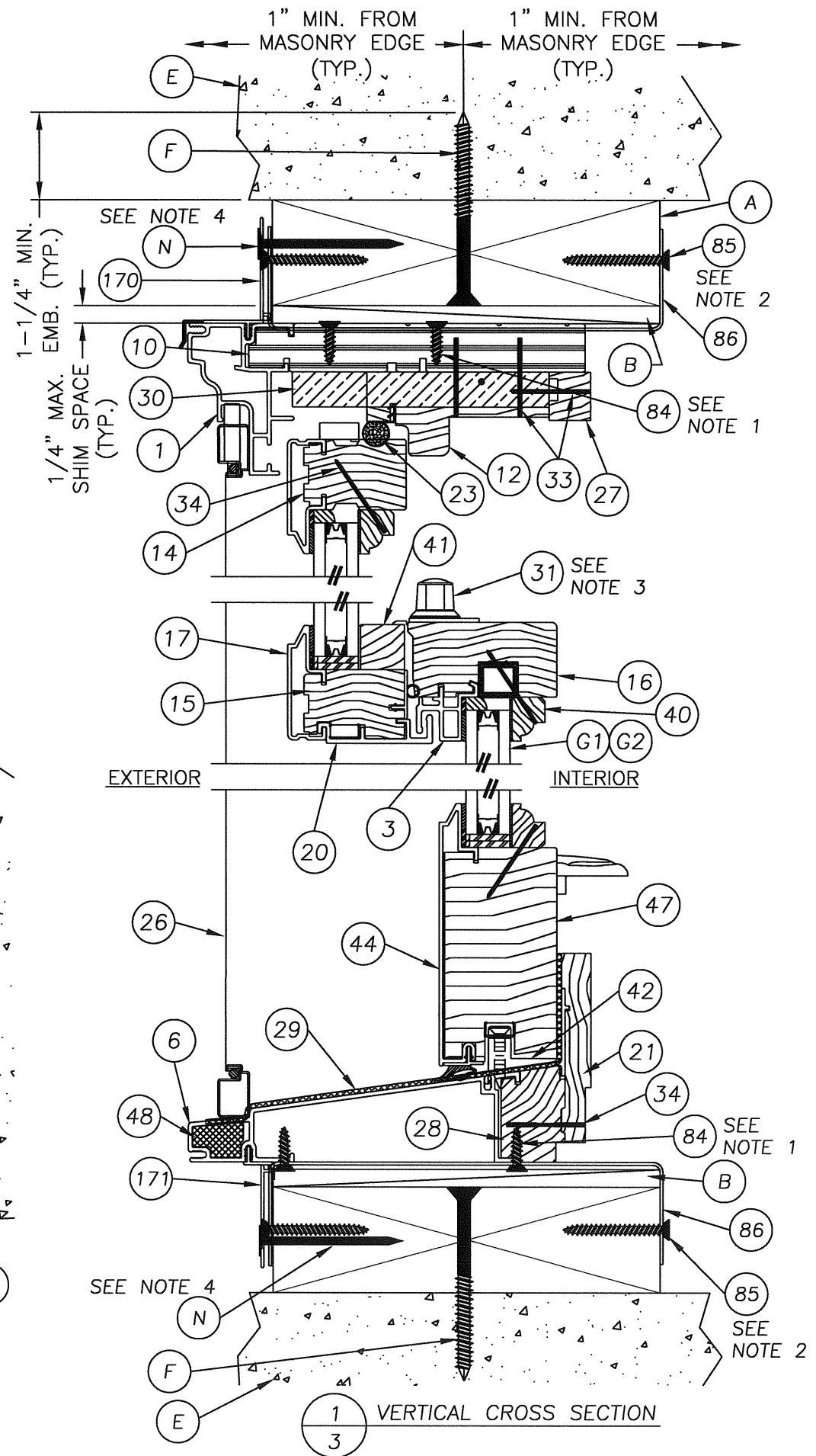
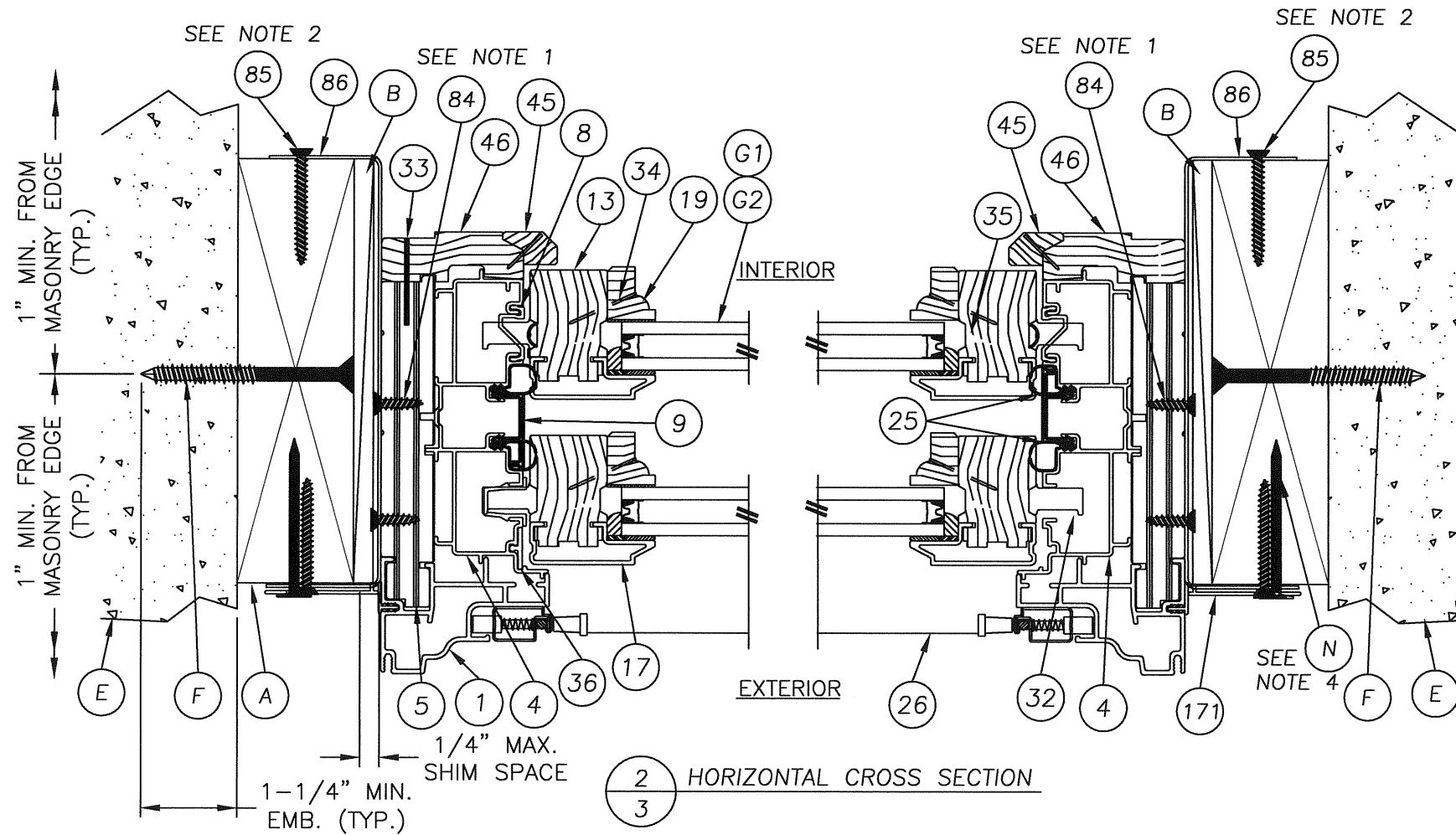
PRODUCT: SERIES T-7 TALON ALUMINUM CLAD WOOD DBL HUNG WINDOW "NON-IMPACT"
PART OR ASSEMBLY: TYPICAL ELEVATION, DESIGN PRESSURES & GENERAL NOTES

NO.	DATE	ADDED EYEBROW	BY	REVISIONS
1	9/5/08		AL	

DATE: 05/21/08
SCALE: N.T.S.
DWG. BY: DAT
CHK. BY: WWH
DRAWING NO.: FL-9568.1
SHEET 1 OF 6

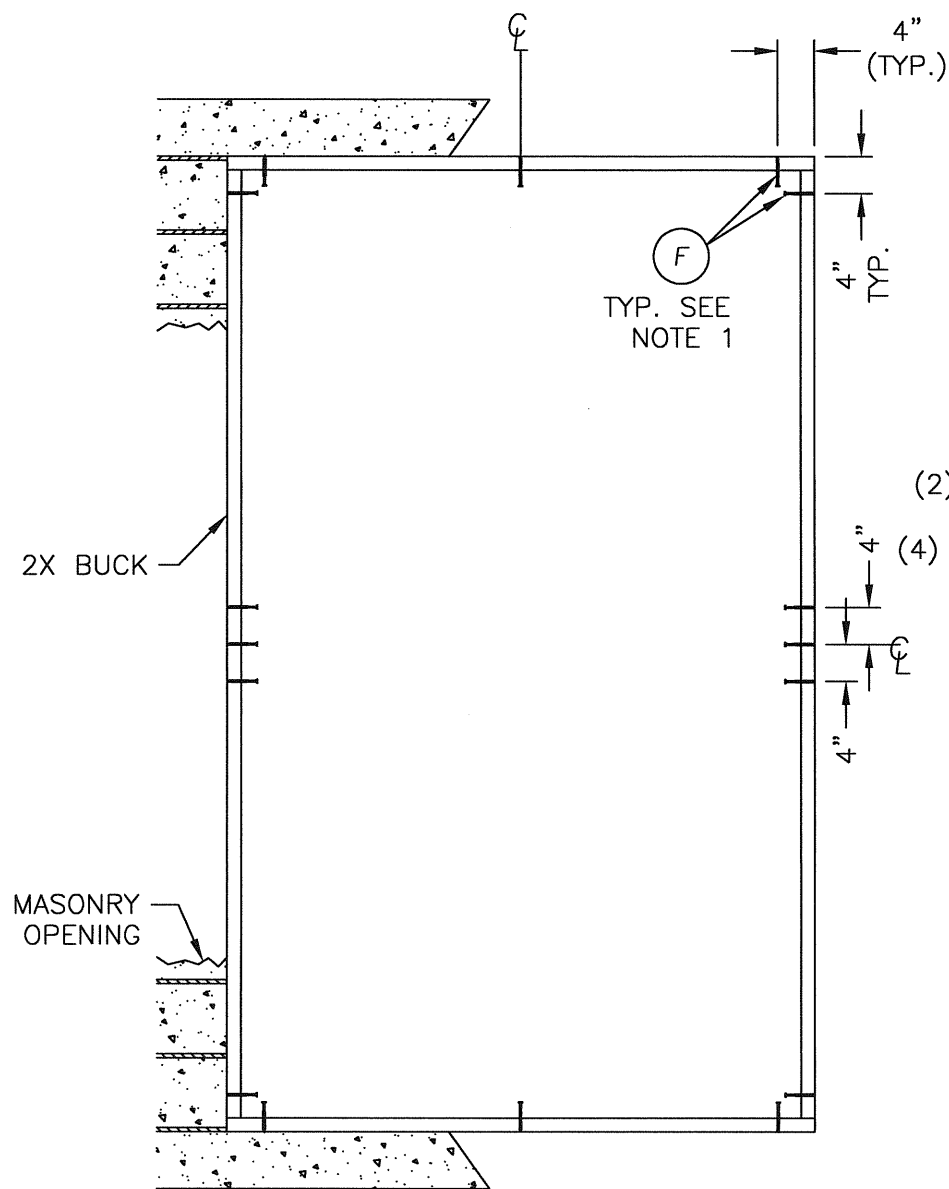


- NOTES:
- #8 x 5/8" FLAT HEAD S.M.S. (4) REQ'D INTO FRAME PER STRAP
 - #8 x 1-1/2" FLAT HEAD S.M.S. (4) REQ'D INTO BUCK 2 ON EACH SIDE. SEE NOTE 4
 - LOCATE OPERATING SASH LOCKS 8" FROM EACH END.
 - FOR 2X STUD CONSTRUCTION, THE LENGTH OF ALL ANCHORS SHALL BE INCREASED AN AMOUNT EQUAL TO THE THICKNESS OF ANY SHEATHING OR WALL COVERINGS SUCH THAT PENETRATION OF THE ANCHOR INTO THE STUD SHALL BE NO LESS THAN THAT SHOWN IN THE MASONRY 2X BUCK INSTALLATION IN THIS DRAWING.

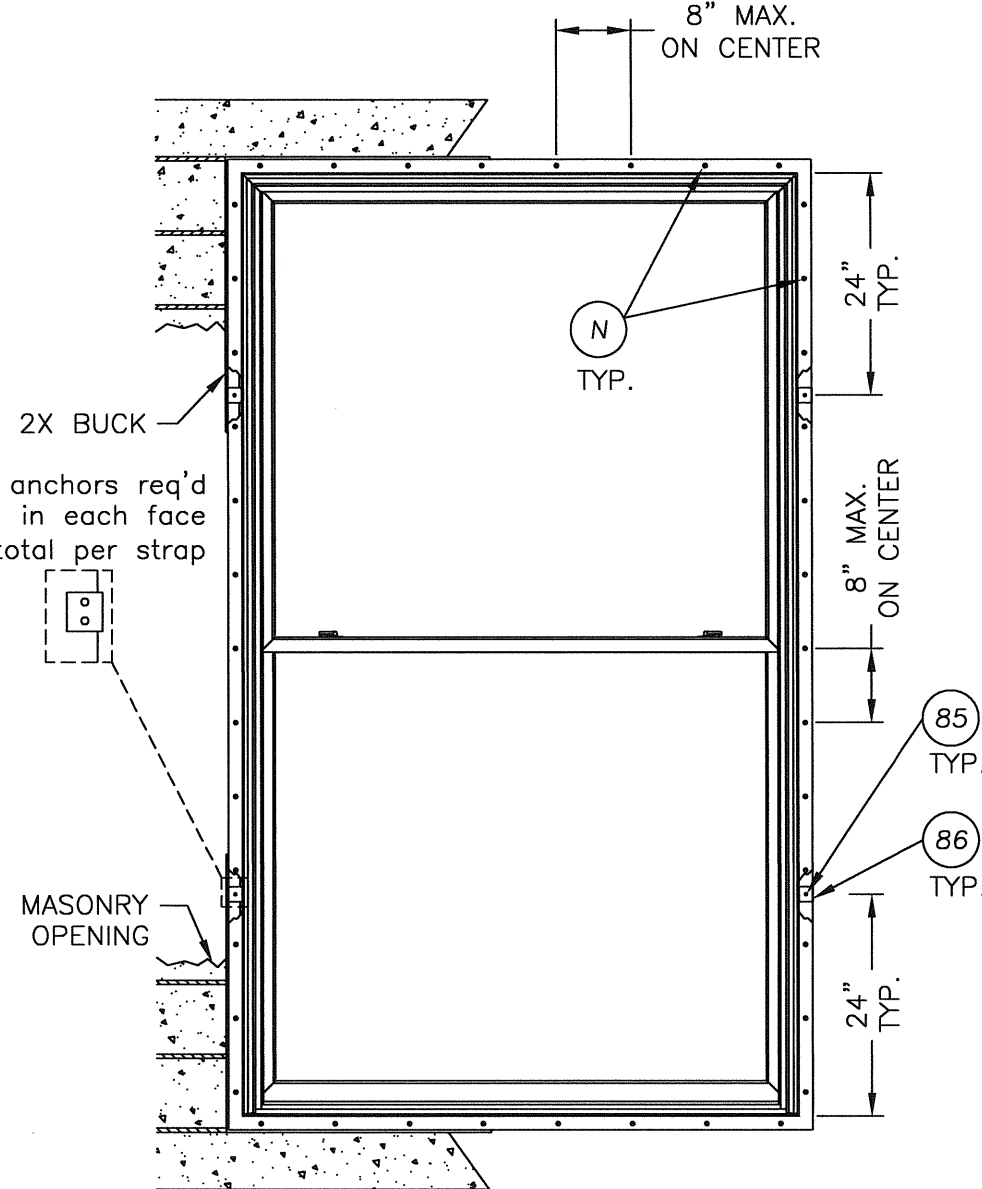


Documents Prepared By: RW BUILDING CONSULTANTS, INC. P.O. Box 230 Valrico FL 33595 Phone No.: 813.659.9197 Florida Board of Professional Engineers Certificate of Authorization No. 9813 Wendell W. Haney, P.E. No. 54158	
PRODUCT: SERIES T-7 TALON ALUMINUM CLAD WOOD DBL HUNG WINDOW "NON-IMPACT"	PART OR ASSEMBLY: VERTICAL & HORIZONTAL CROSS SECTIONS
DATE: 05/21/08 SCALE: N.T.S. DWG. BY: DAT CHK. BY: WWH DRAWING NO.: FL-9568.1	REVISIONS NO. DATE 1 9/5/08 ADDED EYEBROW AL BY
SHEET 3 OF 6	

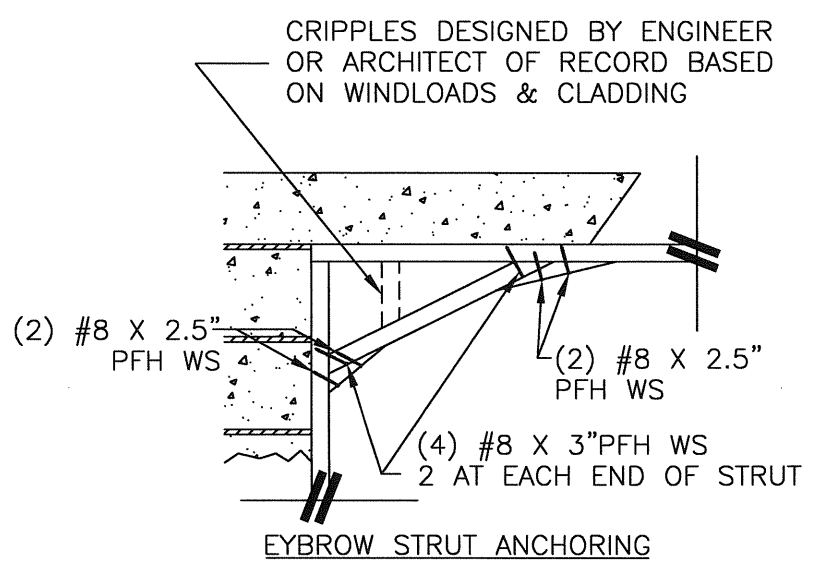
R:\A - Projects\Project Folders\Proj 1201-1300\pf 1294\PF1294 ORIGINAL.D. RWBC Drawings\FL-9568\FL-9568.1.dwg, 4 (2)



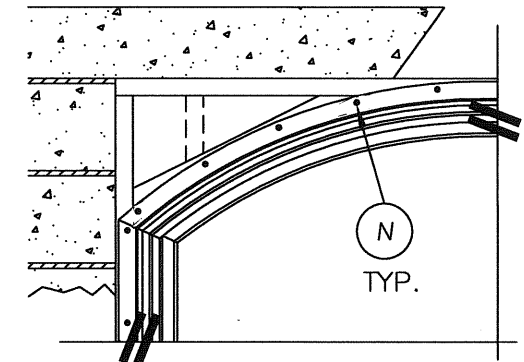
BUCK ANCHORING



FRAME ANCHORING



EYEBROW STRUT ANCHORING



EYEBROW FRAME ANCHORING

Permit holder to insure that anchors embed into structural wood buck or strut material and not in gaps or interfaces.

NOTES:

- 1/4" Elco Tapcon anchoring 2x buck require a minimum 1" clearance to masonry edges, a 1-1/4" minimum embedment and a minimum 4" clearance to adjacent tapcons. Substitution of equal concrete screws from a different supplier may have different edge distance and center distance requirements. Tapcon locations at the corners, centerlines and at meeting rail centerline locations may be adjusted to maintain the minimum edge distance to mortar joints. If Tapcon locations noted as "MAX. ON CENTER" must be adjusted to maintain the minimum edge distance to mortar joints, additional tapcons may be required to ensure the maximum on center dimension is not exceeded.

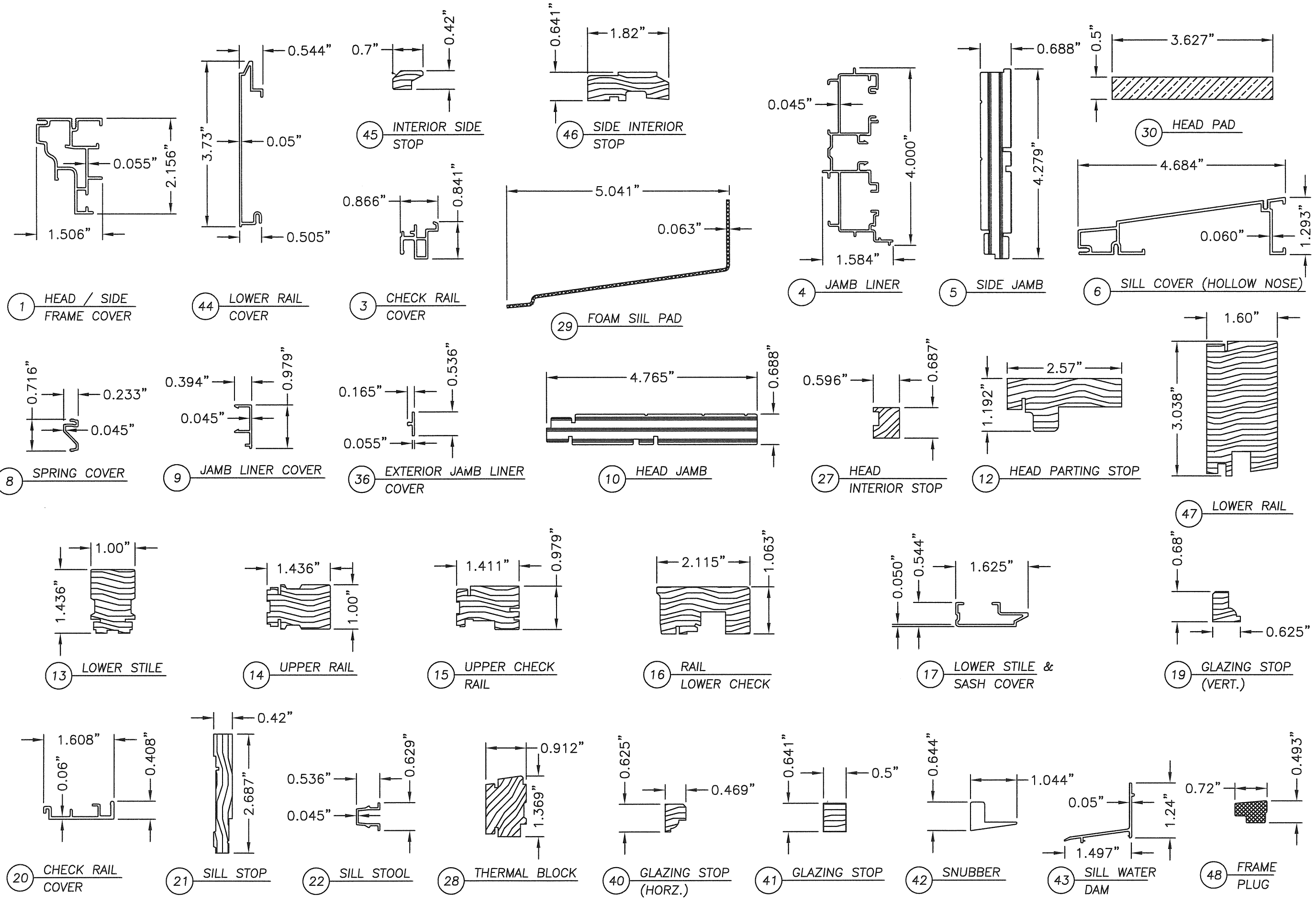
Documents Prepared By: **RW** BUILDING CONSULTANTS, INC.
P.O. Box 230 Valrico FL 33595
Phone No.: 813.659.9197
Florida Board of Professional Engineers
Certificate Of Authorization No. 9813
Wendell W. Hapsy, P.E. No. 54158

PRODUCT: SERIES T-7 TALON ALUMINUM CLAD WOOD DBL HUNG WINDOW "NON-IMPACT"
PART OR ASSEMBLY: BUCK & FRAME ANCHORING

NO.	DATE	ADDED EYEBROW	REVISIONS
1	9/5/08	AL	BY

DATE: 05/21/08
SCALE: N.T.S.
DWG. BY: DAT
CHK. BY: WWH
DRAWING NO.: FL-9568.1
SHEET 4 OF 6

© 2008 R.W. BUILDING CONSULTANTS INC.



Documents Prepared By:
RW BUILDING CONSULTANTS, INC.
 P.O. Box 230 Vairico FL 33595
 Phone No.: 813.659.9197
 Florida Board of Professional Engineers
 Certificate Of Authorization No. 9813
Wendell W. Hargrey
 Wendell W. Hargrey, P.E. No. 54158

PRODUCT: SERIES T-7 TALON ALUMINUM CLAD WOOD DBL HUNG WINDOW "NON-IMPACT"
 PART OR ASSEMBLY: COMPONENTS

NO.	DATE	ADDED EYEBROW	AL	BY
1	9/5/08			

REVISIONS

DATE: 05/21/08
 SCALE: N.T.S.
 DWG. BY: DAT
 CHK. BY: WWH
 DRAWING NO.: FL-9568.1
 SHEET 5 OF 6

