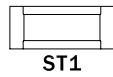


TRANSOM PANEL OPTIONS



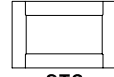
ST1

STILES: 4 11/16"
RAILS: 2 3/4"



ST2

STILES: 2 3/4"
RAILS: 2 3/4"



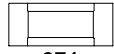
ST3

STILES: 4 11/16"
RAILS: 4 11/16"



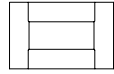
ST4

STILES: 2 3/4"
RAILS: 4 11/16"



CT1

STILES: 6 1/2"
RAILS: 2 3/4"



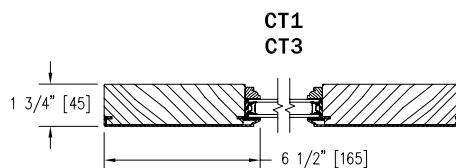
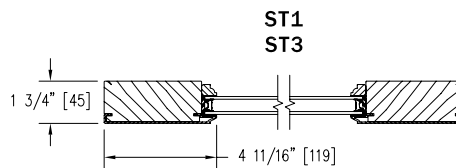
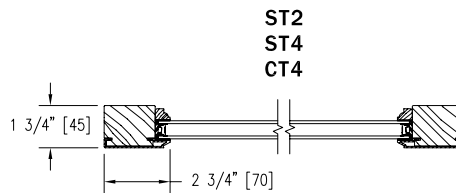
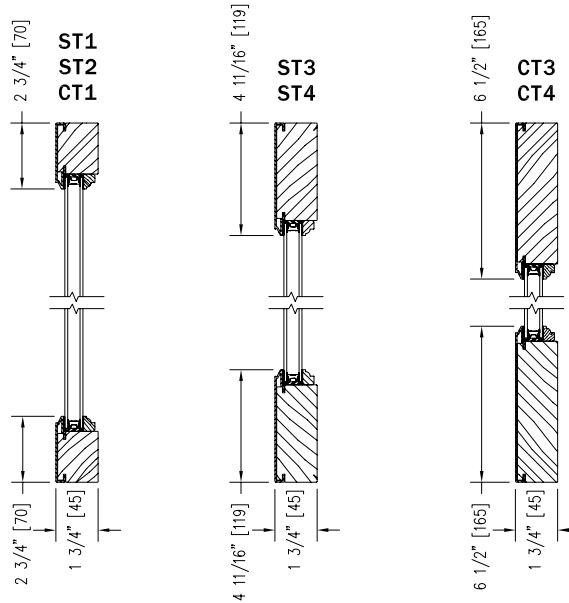
CT3

STILES: 6 1/2"
RAILS: 6 1/2"



CT4

STILES: 2 3/4"
RAILS: 6 1/2"



Notes:

Dynamically configure section details to your specific needs by going to EagleWindow.com, select Wintelligence. Eagle Window & Door reserves the right to change the specifications without notice.

DRAWING # AD3087
SCALE: NONE
REVISION: 2/2/09

