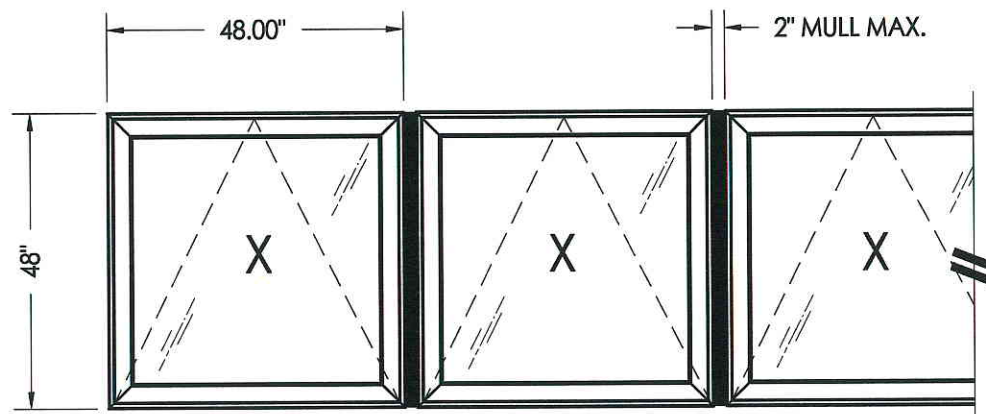


SERIES 02 AXIOM CLAD VENT AWNING WINDOW SINGLE UNIT "NON-IMPACT"

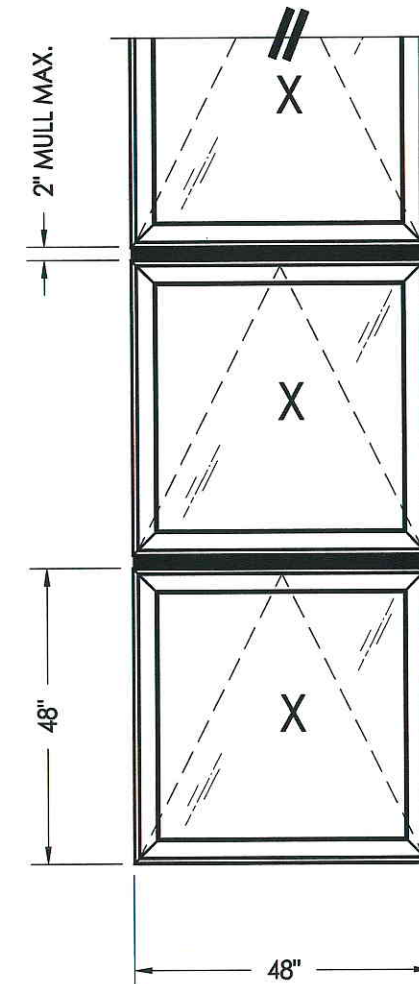
GENERAL NOTES

1. This product has been evaluated and is in compliance with the 2007 Florida Building Code (FBC) structural requirements excluding the "High Velocity Hurricane Zone" (HVHZ).
2. Product anchors shall be as listed and spaced as shown on details. Anchor embedment to base material shall be beyond wall dressing or stucco.
3. When used in areas requiring wind borne debris protection this product is required to be protected with an impact resistant covering that complies with Section 1609.1.2 of the FBC.
4. For through the frame anchoring in 2x stud framing construction, anchoring of these units shall be the same as that shown for 2x buck masonry construction.
5. Site conditions that deviate from the details of this drawing require further engineering analysis by a licensed engineer or registered architect.

TABLE OF CONTENTS	
SHEET #	DESCRIPTION
1	Typical Elevations, Design Pressures & General Notes
2	Glazing details
3	Mullion load table & details
4	Mullion load table & details
5	Mullion load table & details
6	Vertical & Horizontal cross sections
7	Optional masonry sills, strap anchor & 1X Buck
8	Optional strap anchor
9	Buck and frame anchoring
10	Components
11	Bill of materials



HORIZONTAL CONFIGURATION



VERTICAL CONFIGURATION

OVERALL FRAME DIMENSION	OVERALL D.L.O. DIMENSION	GLASS TYPE	DESIGN PRESSURE (PSF)	
			POS.	NEG.
48.00" x 48.00"	41.87" x 41.87"	G2	+47.0	-47.0
48.00" x 36.00"	41.87" x 29.87"	G10	+50.0	-50.0

NOTE -

1. DESIGN PRESSURE RATING IS THE LESSOR OF INDIVIDUAL UNIT RATING AS LISTED ON SHEET 1 AND THE LOAD RATING FOR RESPECTIVE MULLION TYPES LISTED ON SHEETS 3, 4 & 5.
2. SHOWN CONFIGURATIONS ARE FOR ILLUSTRATIVE PURPOSES ONLY AND ARE NOT MEANT TO BE RESTRICTIVE WHEN COMBINING UNITS FOR VARIOUS ELEVATIONS.

Documents Prepared By:

RW BUILDING CONSULTANTS, INC.
P.O. Box 230 Valrico FL 33595
Phone No.: 813.659.9797
Florida Board of Professional Engineers
Certificate Of Authorization No. 9813
Wendell W. Honey, P.E. No. 54158

PRODUCT: CLAD VENT AWNING WINDOW "NON-IMPACT"
PART OR ASSEMBLY: TYPICAL ELEVATION, DESIGN PRESSURES & GENERAL NOTES

NO.	DATE	BY	REVISIONS

DATE: 5/6/08

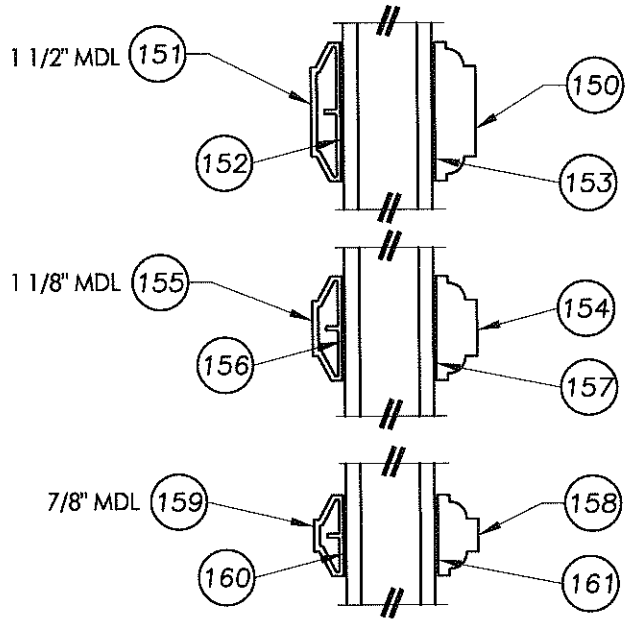
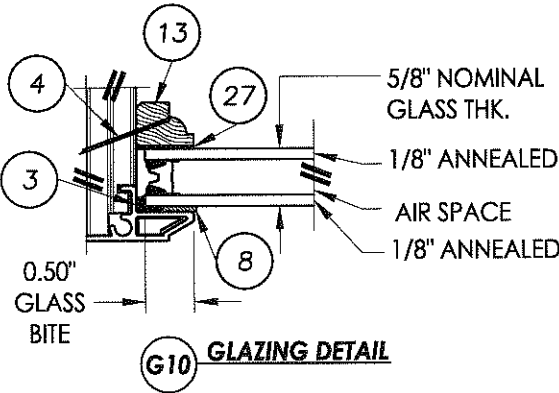
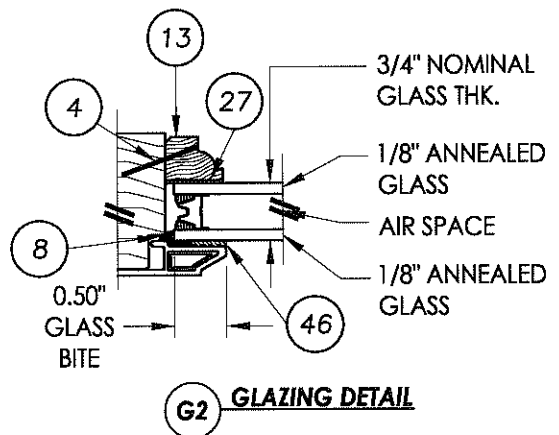
SCALE: N.T.S.

DWG. BY: JK

CHK. BY: WWH

DRAWING NO.: FL-8554.2

SHEET 1 OF 11



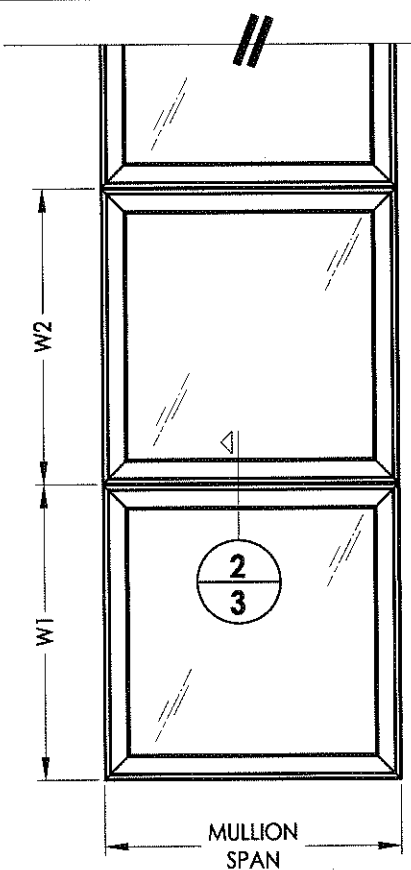
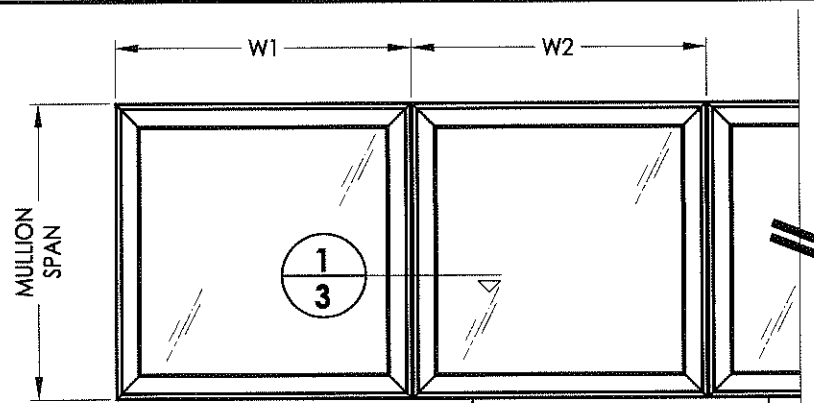
Documents Prepared By: **RW** BUILDING CONSULTANTS, INC.
P.O. Box 230 Vairico FL 33595
Phone No.: 813.659.9197
Florida Board of Professional Engineers
Certificate Of Authorization No. 9813
Wendell W. Hanes 9-8-08
Wendell W. Hanes, P.E. No. 54158

PRODUCT:
CLAD VENT AWNING WINDOW "NON-IMPACT"
PART OR ASSEMBLY:
GLAZING DETAILS

NO.	DATE	BY	REVISIONS

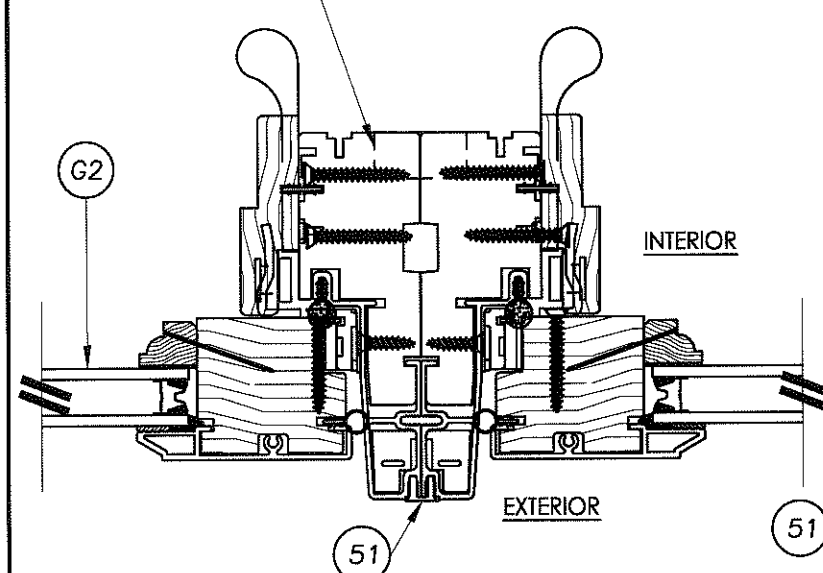
DATE: 5/7/08
SCALE: N.T.S.
DWG. BY: JK
CHK. BY: WWH
DRAWING NO.: FL-8554.2
SHEET 2 OF 11

© 2008 R.W. BUILDING CONSULTANTS INC.

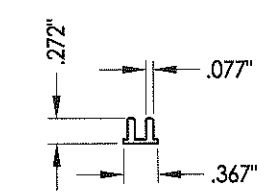


EAGLE		AWNING COMBINATION (ZERO) MULLION LOAD TABLE (PSF)												
		TRIBUTARY WIDTH												
MULLION SPAN	48"	50.00	50.00	50.00	50.00	50.00	50.00	50.00	50.00	50.00	50.00	50.00	50.00	50.00
	47"	50.00	50.00	50.00	50.00	50.00	50.00	50.00	50.00	50.00	50.00	50.00	50.00	50.00
	46"	50.00	50.00	50.00	50.00	50.00	50.00	50.00	50.00	50.00	50.00	50.00	50.00	50.00
	45"	50.00	50.00	50.00	50.00	50.00	50.00	50.00	50.00	50.00	50.00	50.00	50.00	50.00
	44"	50.00	50.00	50.00	50.00	50.00	50.00	50.00	50.00	50.00	50.00	50.00	50.00	50.00
	43"	50.00	50.00	50.00	50.00	50.00	50.00	50.00	50.00	50.00	50.00	50.00	50.00	50.00
	42"	50.00	50.00	50.00	50.00	50.00	50.00	50.00	50.00	50.00	50.00	50.00	50.00	50.00
	41"	50.00	50.00	50.00	50.00	50.00	50.00	50.00	50.00	50.00	50.00	50.00	50.00	50.00
	40"	50.00	50.00	50.00	50.00	50.00	50.00	50.00	50.00	50.00	50.00	50.00	50.00	50.00
	39"	50.00	50.00	50.00	50.00	50.00	50.00	50.00	50.00	50.00	50.00	50.00	50.00	50.00
	38"	50.00	50.00	50.00	50.00	50.00	50.00	50.00	50.00	50.00	50.00	50.00	50.00	50.00
	37"	50.00	50.00	50.00	50.00	50.00	50.00	50.00	50.00	50.00	50.00	50.00	50.00	50.00
	36"	50.00	50.00	50.00	50.00	50.00	50.00	50.00	50.00	50.00	50.00	50.00	50.00	50.00
	35"	50.00	50.00	50.00	50.00	50.00	50.00	50.00	50.00	50.00	50.00	50.00	50.00	50.00
	34"	50.00	50.00	50.00	50.00	50.00	50.00	50.00	50.00	50.00	50.00	50.00	50.00	50.00
	33"	50.00	50.00	50.00	50.00	50.00	50.00	50.00	50.00	50.00	50.00	50.00	50.00	50.00
32"	50.00	50.00	50.00	50.00	50.00	50.00	50.00	50.00	50.00	50.00	50.00	50.00	50.00	
31"	50.00	50.00	50.00	50.00	50.00	50.00	50.00	50.00	50.00	50.00	50.00	50.00	50.00	
30"	50.00	50.00	50.00	50.00	50.00	50.00	50.00	50.00	50.00	50.00	50.00	50.00	50.00	
29"	50.00	50.00	50.00	50.00	50.00	50.00	50.00	50.00	50.00	50.00	50.00	50.00	50.00	
28"	50.00	50.00	50.00	50.00	50.00	50.00	50.00	50.00	50.00	50.00	50.00	50.00	50.00	
27"	50.00	50.00	50.00	50.00	50.00	50.00	50.00	50.00	50.00	50.00	50.00	50.00	50.00	
26"	50.00	50.00	50.00	50.00	50.00	50.00	50.00	50.00	50.00	50.00	50.00	50.00	50.00	
25"	50.00	50.00	50.00	50.00	50.00	50.00	50.00	50.00	50.00	50.00	50.00	50.00	50.00	
24"	50.00	50.00	50.00	50.00	50.00	50.00	50.00	50.00	50.00	50.00	50.00	50.00	50.00	
23"	50.00	50.00	50.00	50.00	50.00	50.00	50.00	50.00	50.00	50.00	50.00	50.00	50.00	

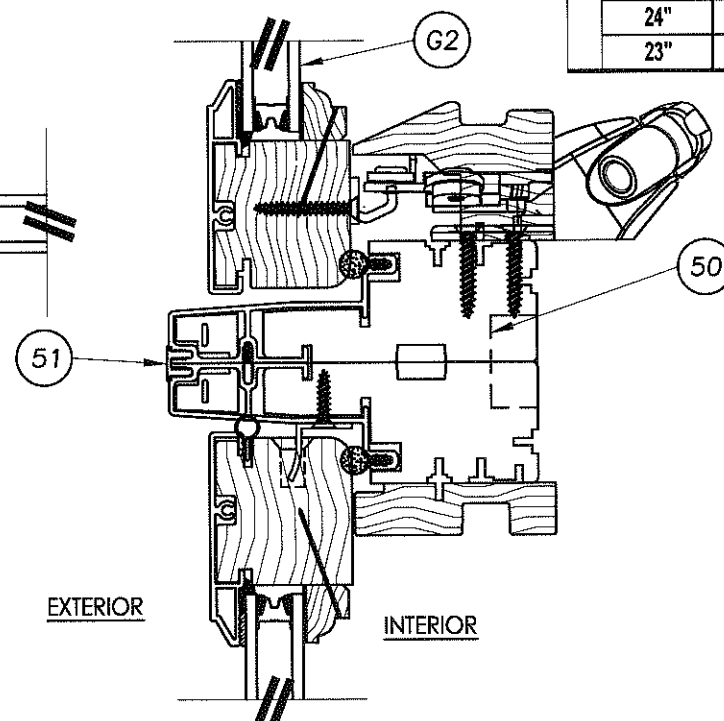
50 SEE ANCHORING SHEETS FOR LOCATIONS OF MULLION FASTENERS.



1 HORIZONTAL CROSS SECTION
3 FRAME LVL HATCH REMOVED FOR CLARITY



51 ZERO MULLION COVER



2 VERTICAL CROSS SECTION
3 FRAME LVL HATCH REMOVED FOR CLARITY

50 SEE ANCHORING SHEETS FOR LOCATIONS OF MULLION FASTENERS.

INSTRUCTIONS FOR USE OF THE MULLION LOAD TABLE:

1. DETERMINE THE DESIGN LOAD REQUIREMENT PER CHAPTER 16 OF THE FBC FOR THE PARTICULAR OPENING UNDER CONSIDERATION.
2. FOR THE PARTICULAR OPENING, DETERMINE THE TRIBUTARY WIDTH AND MULLION SPAN. REFERENCE THE SKETCHES ON THIS SHEET FOR MULLION SPAN AND TRIBUTARY WIDTH DETERMINATION.
3. IN THE FIRST COLUMN OF THE TABLE, LOCATE THE MULLION SPAN. IN THE FIRST ROW OF THE TABLE, LOCATE THE TRIBUTARY WIDTH. AT THE INTERSECTION OF THE ROW CONTAINING THE MULLION SPAN AND THE COLUMN CONTAINING THE TRIBUTARY WIDTH, READ THE MULLION LOAD RATING GIVEN IN PSF. THE MULLION LOAD RATING MUST BE EQUAL TO OR GREATER THAN THE DESIGN LOAD REQUIREMENT DETERMINED IN STEP 1 ABOVE.

$$\text{TRIBUTARY WIDTH} = \frac{W1 + W2}{2}$$

Documents Prepared By: **RW BUILDING CONSULTANTS, INC.**
 P.O. Box 230 Valrico FL 33595
 Phone No.: 813.659.9197
 Florida Board of Professional Engineers
 Certificate Of Authorization No. 9813
Wendell W. Honeys
 Wendell W. Honeys, P.E. No. 54158

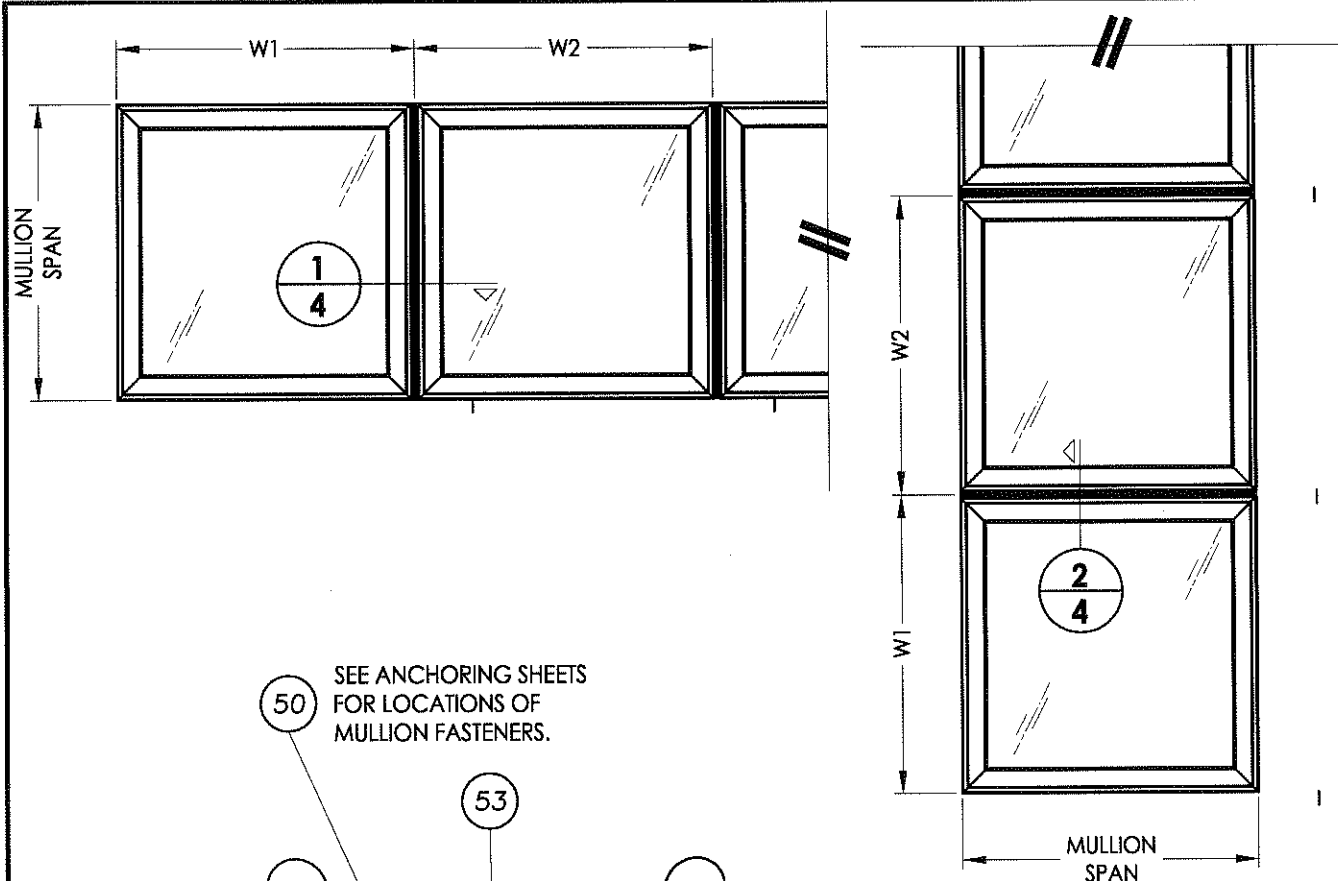
PRODUCT: CLAD VENT AWNING WINDOW "NON-IMPACT"
 PART OR ASSEMBLY: MULLION LOAD TABLE & DETAILS

NO.	DATE	BY	REVISIONS

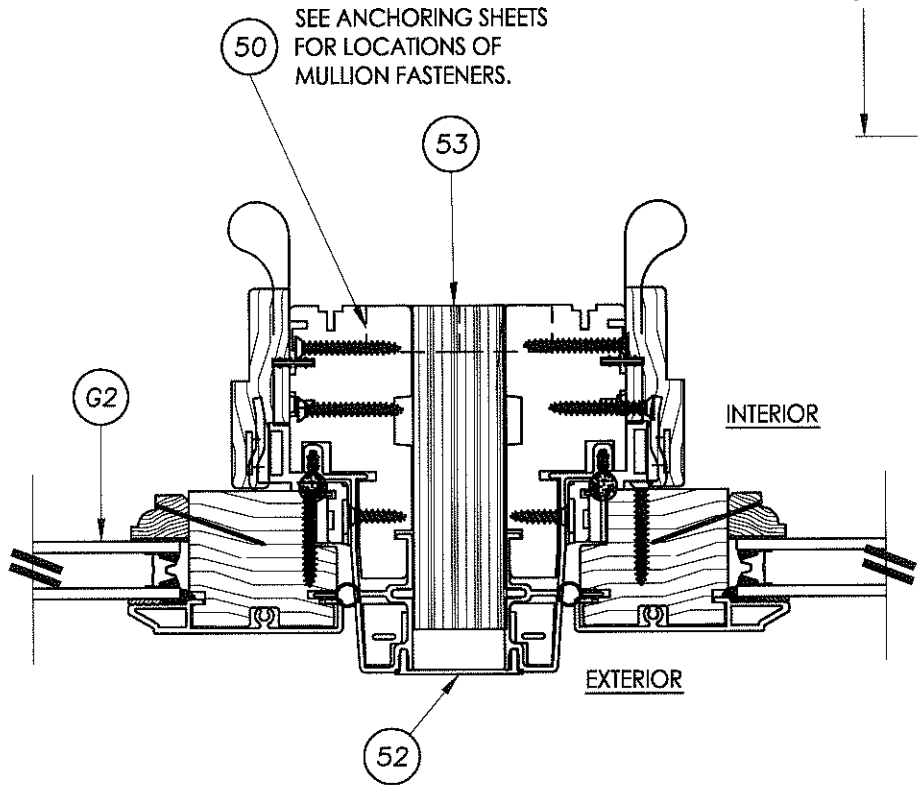
DATE: 5/7/08
 SCALE: N.T.S.
 DWG. BY: JK
 CHK. BY: WWH
 DRAWING NO.: FL-8554.2
 SHEET 3 OF 11

© 2008 R.W. BUILDING CONSULTANTS INC.

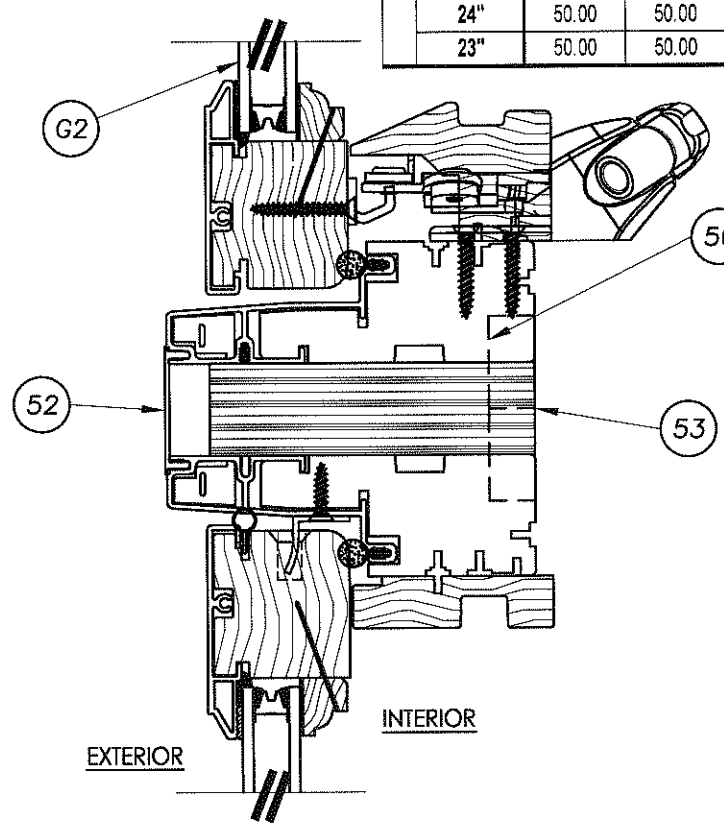
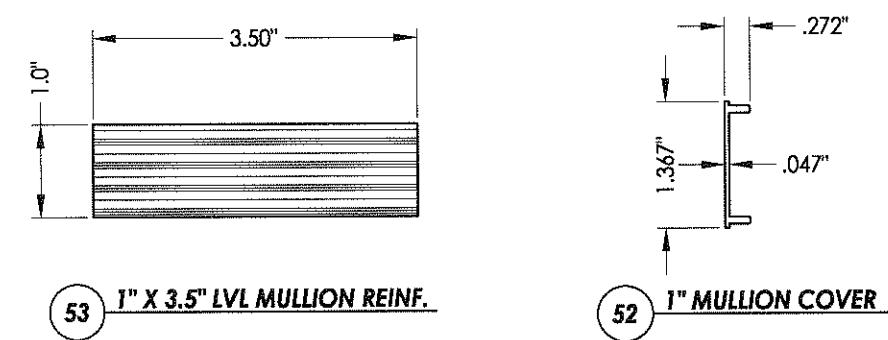
R:\A - Projects\Project Folders\Proj 1101 - 1200\p1172\DWG - RWBC Drawings\FL-8554\FL-8554NON-IMPACT.dwg, FL-8554.2-4



AWNING WITH 1"X3.5" LVL REINFORCING MULLION LOAD TABLE (PSF)													
EAGLE	TRIBUTARY WIDTH												
	24"	28"	30"	32"	34"	36"	38"	40"	42"	44"	46"	48"	50"
48"	50.00	50.00	50.00	50.00	50.00	50.00	50.00	50.00	50.00	50.00	50.00	50.00	50.00
47"	50.00	50.00	50.00	50.00	50.00	50.00	50.00	50.00	50.00	50.00	50.00	50.00	50.00
46"	50.00	50.00	50.00	50.00	50.00	50.00	50.00	50.00	50.00	50.00	50.00	50.00	50.00
45"	50.00	50.00	50.00	50.00	50.00	50.00	50.00	50.00	50.00	50.00	50.00	50.00	50.00
44"	50.00	50.00	50.00	50.00	50.00	50.00	50.00	50.00	50.00	50.00	50.00	50.00	50.00
43"	50.00	50.00	50.00	50.00	50.00	50.00	50.00	50.00	50.00	50.00	50.00	50.00	50.00
42"	50.00	50.00	50.00	50.00	50.00	50.00	50.00	50.00	50.00	50.00	50.00	50.00	50.00
41"	50.00	50.00	50.00	50.00	50.00	50.00	50.00	50.00	50.00	50.00	50.00	50.00	50.00
40"	50.00	50.00	50.00	50.00	50.00	50.00	50.00	50.00	50.00	50.00	50.00	50.00	50.00
39"	50.00	50.00	50.00	50.00	50.00	50.00	50.00	50.00	50.00	50.00	50.00	50.00	50.00
38"	50.00	50.00	50.00	50.00	50.00	50.00	50.00	50.00	50.00	50.00	50.00	50.00	50.00
37"	50.00	50.00	50.00	50.00	50.00	50.00	50.00	50.00	50.00	50.00	50.00	50.00	50.00
36"	50.00	50.00	50.00	50.00	50.00	50.00	50.00	50.00	50.00	50.00	50.00	50.00	50.00
35"	50.00	50.00	50.00	50.00	50.00	50.00	50.00	50.00	50.00	50.00	50.00	50.00	50.00
34"	50.00	50.00	50.00	50.00	50.00	50.00	50.00	50.00	50.00	50.00	50.00	50.00	50.00
33"	50.00	50.00	50.00	50.00	50.00	50.00	50.00	50.00	50.00	50.00	50.00	50.00	50.00
32"	50.00	50.00	50.00	50.00	50.00	50.00	50.00	50.00	50.00	50.00	50.00	50.00	50.00
31"	50.00	50.00	50.00	50.00	50.00	50.00	50.00	50.00	50.00	50.00	50.00	50.00	50.00
30"	50.00	50.00	50.00	50.00	50.00	50.00	50.00	50.00	50.00	50.00	50.00	50.00	50.00
29"	50.00	50.00	50.00	50.00	50.00	50.00	50.00	50.00	50.00	50.00	50.00	50.00	50.00
28"	50.00	50.00	50.00	50.00	50.00	50.00	50.00	50.00	50.00	50.00	50.00	50.00	50.00
27"	50.00	50.00	50.00	50.00	50.00	50.00	50.00	50.00	50.00	50.00	50.00	50.00	50.00
26"	50.00	50.00	50.00	50.00	50.00	50.00	50.00	50.00	50.00	50.00	50.00	50.00	50.00
25"	50.00	50.00	50.00	50.00	50.00	50.00	50.00	50.00	50.00	50.00	50.00	50.00	50.00
24"	50.00	50.00	50.00	50.00	50.00	50.00	50.00	50.00	50.00	50.00	50.00	50.00	50.00
23"	50.00	50.00	50.00	50.00	50.00	50.00	50.00	50.00	50.00	50.00	50.00	50.00	50.00



1
4 HORIZONTAL CROSS SECTION
FRAME LVL HATCH REMOVED FOR CLARITY



2
4 VERTICAL CROSS SECTION
FRAME LVL HATCH REMOVED FOR CLARITY

SEE ANCHORING SHEETS FOR LOCATIONS OF MULLION FASTENERS.

INSTRUCTIONS FOR USE OF THE MULLION LOAD TABLE:

1. DETERMINE THE DESIGN LOAD REQUIREMENT PER CHAPTER 16 OF THE FBC FOR THE PARTICULAR OPENING UNDER CONSIDERATION.
2. FOR THE PARTICULAR OPENING, DETERMINE THE TRIBUTARY WIDTH AND MULLION SPAN. REFERENCE THE SKETCHES ON THIS SHEET FOR MULLION SPAN AND TRIBUTARY WIDTH DETERMINATION.
3. IN THE FIRST COLUMN OF THE TABLE, LOCATE THE MULLION SPAN. IN THE FIRST ROW OF THE TABLE, LOCATE THE TRIBUTARY WIDTH. AT THE INTERSECTION OF THE ROW CONTAINING THE MULLION SPAN AND THE COLUMN CONTAINING THE TRIBUTARY WIDTH, READ THE MULLION LOAD RATING GIVEN IN PSF. THE MULLION LOAD RATING MUST BE EQUAL TO OR GREATER THAN THE DESIGN LOAD REQUIREMENT DETERMINED IN STEP 1 ABOVE.

$$\text{TRIBUTARY WIDTH} = \frac{W1 + W2}{2}$$

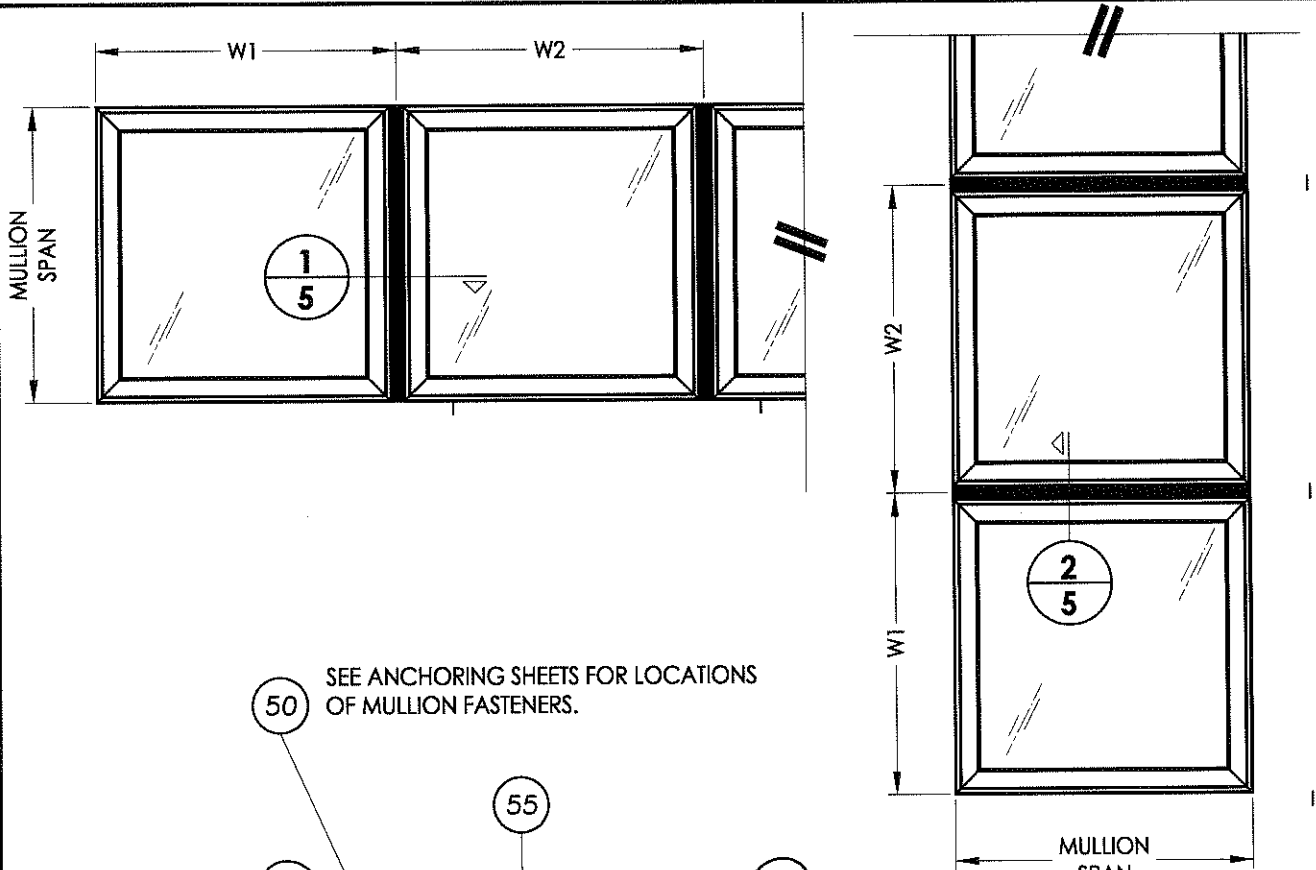
Documents Prepared By:
RW BUILDING CONSULTANTS, INC.
 P.O. Box 230 Valrico FL 33595
 Phone No.: 813.659.9197
 Florida Board of Professional Engineers
 Certificate Of Authorization No. 9813
Wendell W. Honey, P.E.
 Wendell W. Honey, P.E. No. 54158

PRODUCT: CLAD VENT AWNING WINDOW "NON-IMPACT"
 PART OR ASSEMBLY: MULLION LOAD TABLE & DETAILS

NO.	DATE	BY	REVISIONS

DATE: 5/7/08
 SCALE: N.T.S.
 DWG. BY: JK
 CHK. BY: WWH
 DRAWING NO.: FL-8554.2
 SHEET 4 OF 11

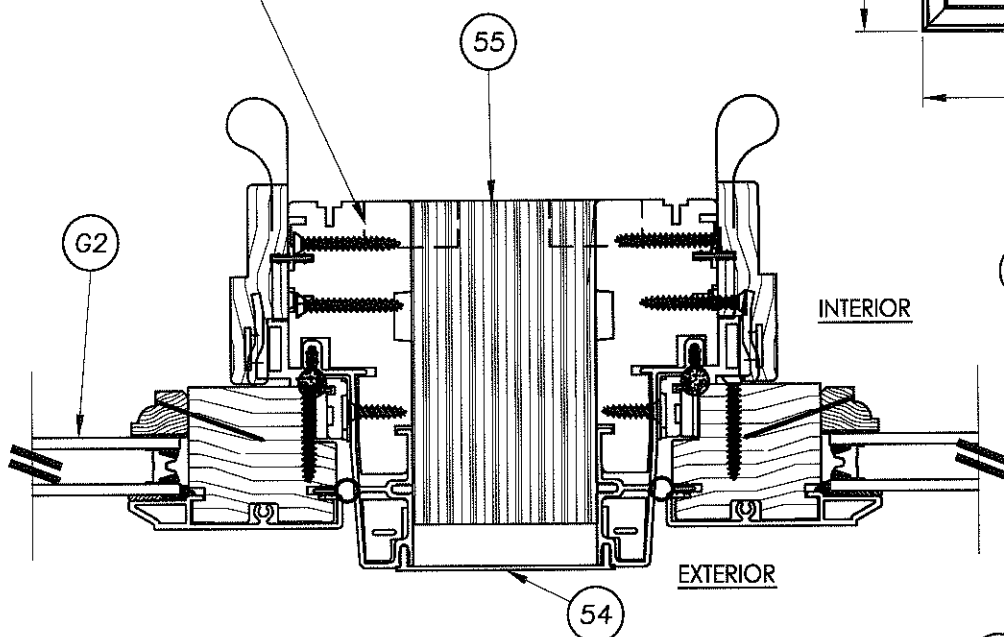
R:\A - Projects\Project Folders\Proj 1101 - 1200\p1172\DWG Drawings\FL-8554\FL-8554NON-IMPACT.dwg, FL-8554.2-5



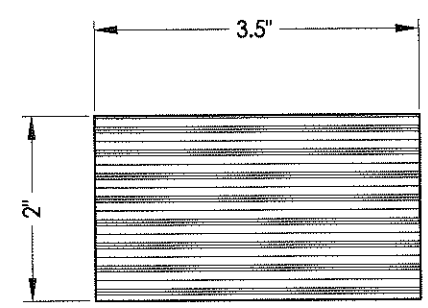
AWNING w/2"x3.5" LVL REINFORCING MULLION LOAD TABLE (PSF)

EAGLE MULLION SPAN	TRIBUTARY WIDTH													
	24"	28"	30"	32"	34"	36"	38"	40"	42"	44"	46"	48"	50"	
48"	50.00	50.00	50.00	50.00	50.00	50.00	50.00	50.00	50.00	50.00	50.00	50.00	50.00	
47"	50.00	50.00	50.00	50.00	50.00	50.00	50.00	50.00	50.00	50.00	50.00	50.00	50.00	
46"	50.00	50.00	50.00	50.00	50.00	50.00	50.00	50.00	50.00	50.00	50.00	50.00	50.00	
45"	50.00	50.00	50.00	50.00	50.00	50.00	50.00	50.00	50.00	50.00	50.00	50.00	50.00	
44"	50.00	50.00	50.00	50.00	50.00	50.00	50.00	50.00	50.00	50.00	50.00	50.00	50.00	
43"	50.00	50.00	50.00	50.00	50.00	50.00	50.00	50.00	50.00	50.00	50.00	50.00	50.00	
42"	50.00	50.00	50.00	50.00	50.00	50.00	50.00	50.00	50.00	50.00	50.00	50.00	50.00	
41"	50.00	50.00	50.00	50.00	50.00	50.00	50.00	50.00	50.00	50.00	50.00	50.00	50.00	
40"	50.00	50.00	50.00	50.00	50.00	50.00	50.00	50.00	50.00	50.00	50.00	50.00	50.00	
39"	50.00	50.00	50.00	50.00	50.00	50.00	50.00	50.00	50.00	50.00	50.00	50.00	50.00	
38"	50.00	50.00	50.00	50.00	50.00	50.00	50.00	50.00	50.00	50.00	50.00	50.00	50.00	
37"	50.00	50.00	50.00	50.00	50.00	50.00	50.00	50.00	50.00	50.00	50.00	50.00	50.00	
36"	50.00	50.00	50.00	50.00	50.00	50.00	50.00	50.00	50.00	50.00	50.00	50.00	50.00	
35"	50.00	50.00	50.00	50.00	50.00	50.00	50.00	50.00	50.00	50.00	50.00	50.00	50.00	
34"	50.00	50.00	50.00	50.00	50.00	50.00	50.00	50.00	50.00	50.00	50.00	50.00	50.00	
33"	50.00	50.00	50.00	50.00	50.00	50.00	50.00	50.00	50.00	50.00	50.00	50.00	50.00	
32"	50.00	50.00	50.00	50.00	50.00	50.00	50.00	50.00	50.00	50.00	50.00	50.00	50.00	
31"	50.00	50.00	50.00	50.00	50.00	50.00	50.00	50.00	50.00	50.00	50.00	50.00	50.00	
30"	50.00	50.00	50.00	50.00	50.00	50.00	50.00	50.00	50.00	50.00	50.00	50.00	50.00	
29"	50.00	50.00	50.00	50.00	50.00	50.00	50.00	50.00	50.00	50.00	50.00	50.00	50.00	
28"	50.00	50.00	50.00	50.00	50.00	50.00	50.00	50.00	50.00	50.00	50.00	50.00	50.00	
27"	50.00	50.00	50.00	50.00	50.00	50.00	50.00	50.00	50.00	50.00	50.00	50.00	50.00	
26"	50.00	50.00	50.00	50.00	50.00	50.00	50.00	50.00	50.00	50.00	50.00	50.00	50.00	
25"	50.00	50.00	50.00	50.00	50.00	50.00	50.00	50.00	50.00	50.00	50.00	50.00	50.00	
24"	50.00	50.00	50.00	50.00	50.00	50.00	50.00	50.00	50.00	50.00	50.00	50.00	50.00	
23"	50.00	50.00	50.00	50.00	50.00	50.00	50.00	50.00	50.00	50.00	50.00	50.00	50.00	

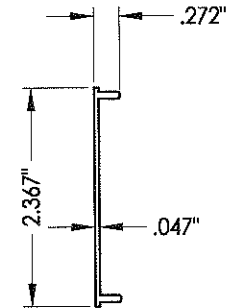
50 SEE ANCHORING SHEETS FOR LOCATIONS OF MULLION FASTENERS.



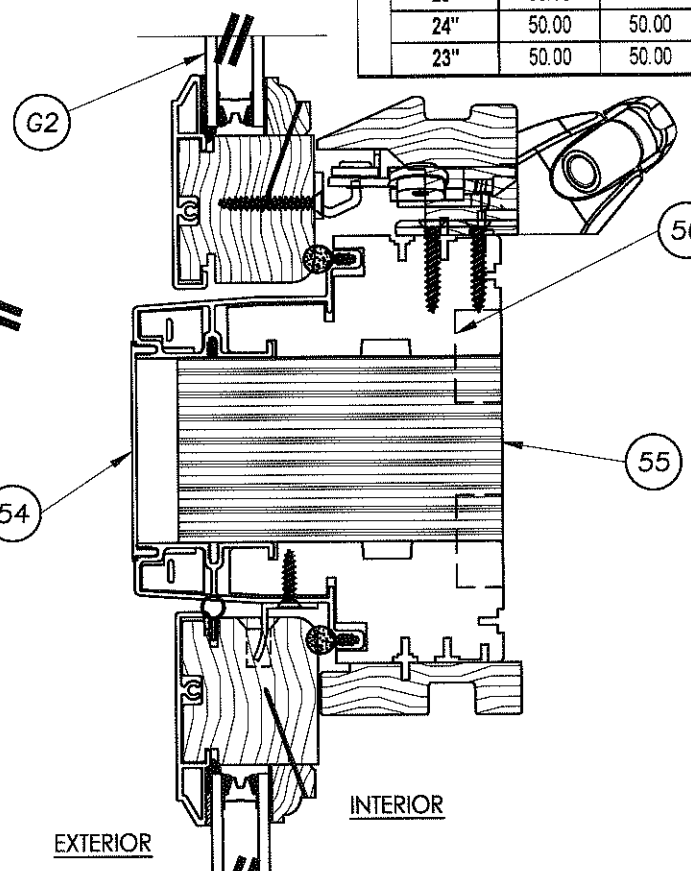
1 HORIZONTAL CROSS SECTION
5 FRAME LVL HATCH REMOVED FOR CLARITY



55 2" X 3.5" LVL MULLION REINF.



54 2" MULLION COVER



2 VERTICAL CROSS SECTION
5 FRAME LVL HATCH REMOVED FOR CLARITY

50 SEE ANCHORING SHEETS FOR LOCATIONS OF MULLION FASTENERS.

INSTRUCTIONS FOR USE OF THE MULLION LOAD TABLE:

1. DETERMINE THE DESIGN LOAD REQUIREMENT PER CHAPTER 16 OF THE FBC FOR THE PARTICULAR OPENING UNDER CONSIDERATION.
2. FOR THE PARTICULAR OPENING, DETERMINE THE TRIBUTARY WIDTH AND MULLION SPAN. REFERENCE THE SKETCHES ON THIS SHEET FOR MULLION SPAN AND TRIBUTARY WIDTH DETERMINATION.
3. IN THE FIRST COLUMN OF THE TABLE, LOCATE THE MULLION SPAN. IN THE FIRST ROW OF THE TABLE, LOCATE THE TRIBUTARY WIDTH. AT THE INTERSECTION OF THE ROW CONTAINING THE MULLION SPAN AND THE COLUMN CONTAINING THE TRIBUTARY WIDTH, READ THE MULLION LOAD RATING GIVEN IN PSF. THE MULLION LOAD RATING MUST BE EQUAL TO OR GREATER THAN THE DESIGN LOAD REQUIREMENT DETERMINED IN STEP 1 ABOVE.

$$\text{TRIBUTARY WIDTH} = \frac{W1 + W2}{2}$$

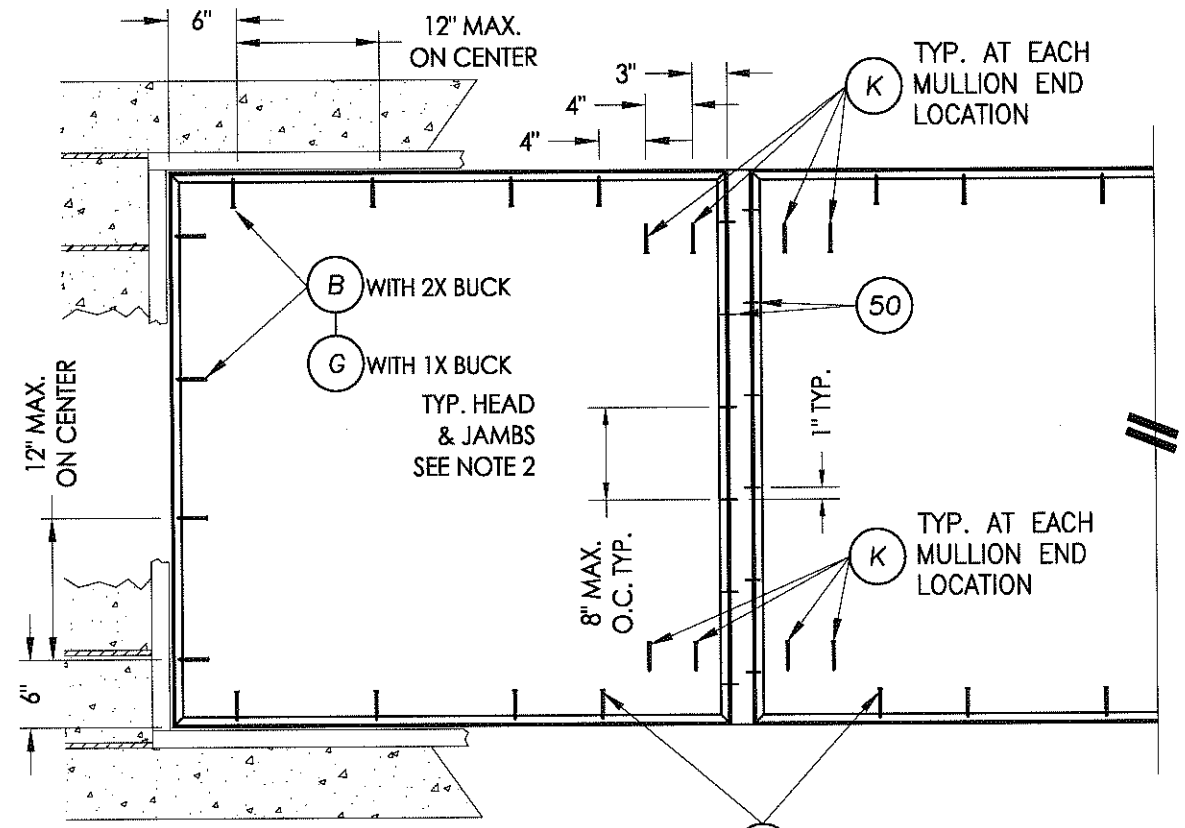
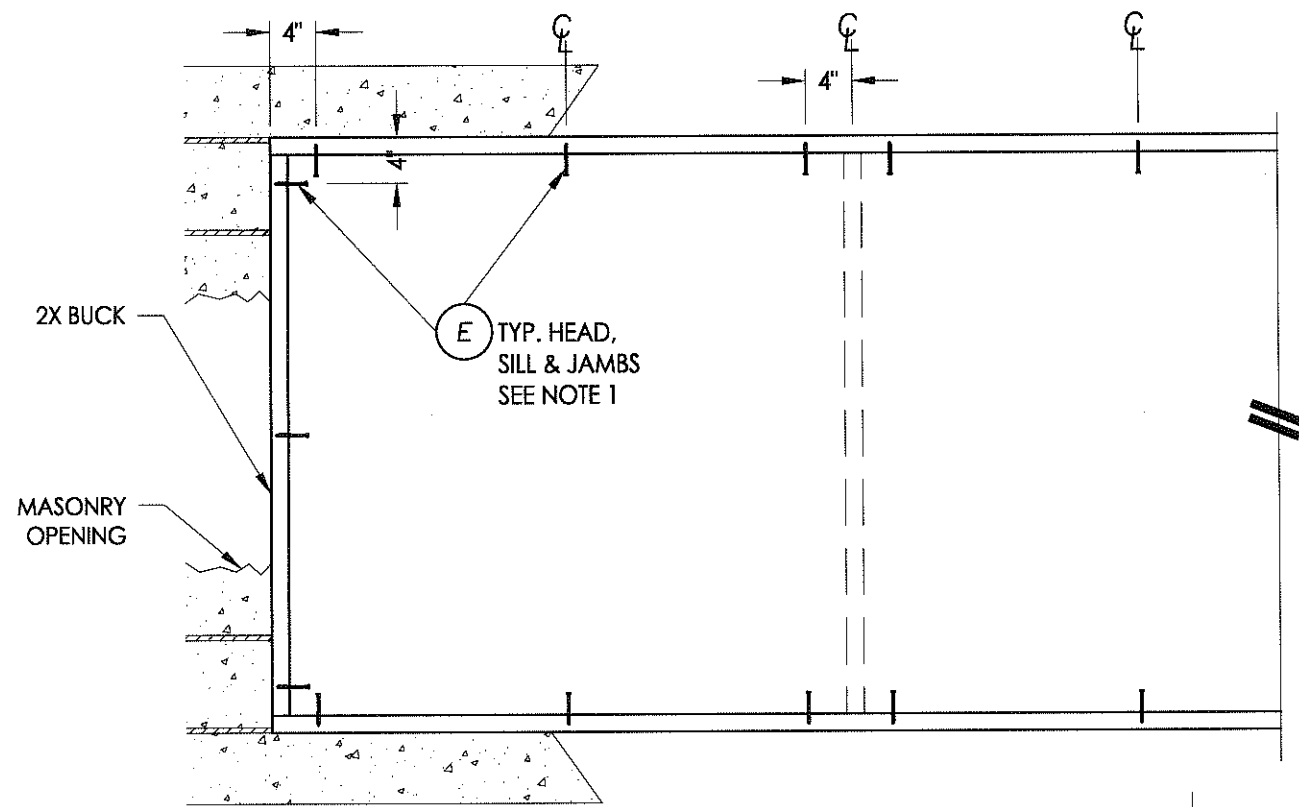
Documents Prepared By: **RW** BUILDING CONSULTANTS, INC.
P.O. Box 230 Valrico FL 33595
Phone No.: 813.659.9197
Florida Board of Professional Engineers
Certificate Of Authorization No. 9813
Wendell W. Jarney 9-0-08
Wendell W. Jarney, P.E. No. 54158

PRODUCT: CLAD VENT AWNING WINDOW "NON-IMPACT"
PART OR ASSEMBLY: MULLION LOAD TABLE & DETAILS

NO.	DATE	BY	REVISIONS

DATE: 5/7/08
SCALE: N.T.S.
DWG. BY: JK
CHK. BY: WWH
DRAWING NO.: FL-8554.2
SHEET 5 OF 11

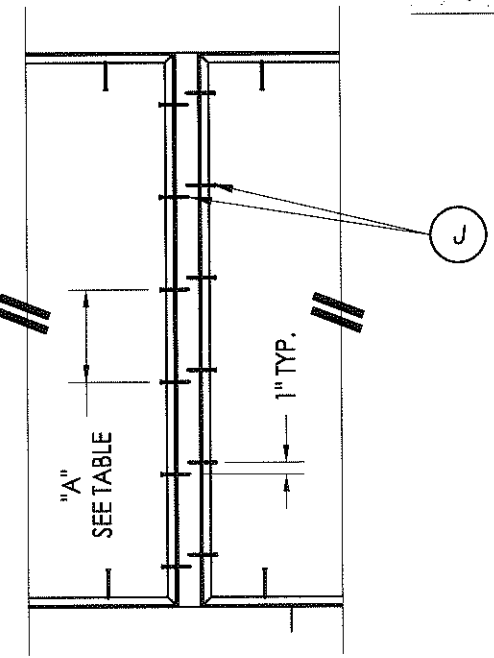
© 2008 R.W. BUILDING CONSULTANTS INC.



BUCK ANCHORING

DP	"A" DIMENSION
UP TO 40 PSF	12" MAX. O.C.
UP TO 60 PSF	10" MAX. O.C.
UP TO 70 PSF	8" MAX. O.C.

OPTIONAL MULLION ASSEMBLY FASTENING
 Substituting #8 X 2-1/2" PFH wood Screws for the corrugated fasteners



FRAME ANCHORING

- (B) WITH 2X BUCK
- (G) WITH 1X BUCK SEE NOTE 2
- (E) WITH MASONRY SILL SEE NOTE 1
- (H) WITH MASONRY SILL SEE NOTE 1

NOTES:

- 1/4" Elco Concrete screws anchoring 2x buck require a minimum 1" clearance to masonry edges, a 1-1/4" minimum embedment and a minimum 4" clearance to adjacent concrete screws. Substitution of equal concrete screws from a different supplier may have different edge distance and center distance requirements. Concrete screw locations at the corners, mullion and centerline locations may be adjusted to maintain the minimum edge distance to mortar joints. If Concrete screw locations noted as "MAX. ON CENTER" must be adjusted to maintain the minimum edge distance to mortar joints, additional Concrete screws may be required to ensure the maximum on center dimension is not exceeded.
- 1/4" ITW concrete screws anchoring frame and/or sill require a minimum 2-1/2" clearance to masonry edges, a 1-1/4" minimum embedment and a minimum 3" clearance to adjacent concrete screws. Substitution of equal concrete screws from a different supplier may have different edge distance and center distance requirements. Concrete screw locations at the corners, mullion and centerline locations may be adjusted to maintain the minimum edge distance to mortar joints. If Concrete screw locations noted as "MAX. ON CENTER" must be adjusted to maintain the minimum edge distance to mortar joints, additional Concrete screws may be required to ensure the maximum on center dimension is not exceeded.

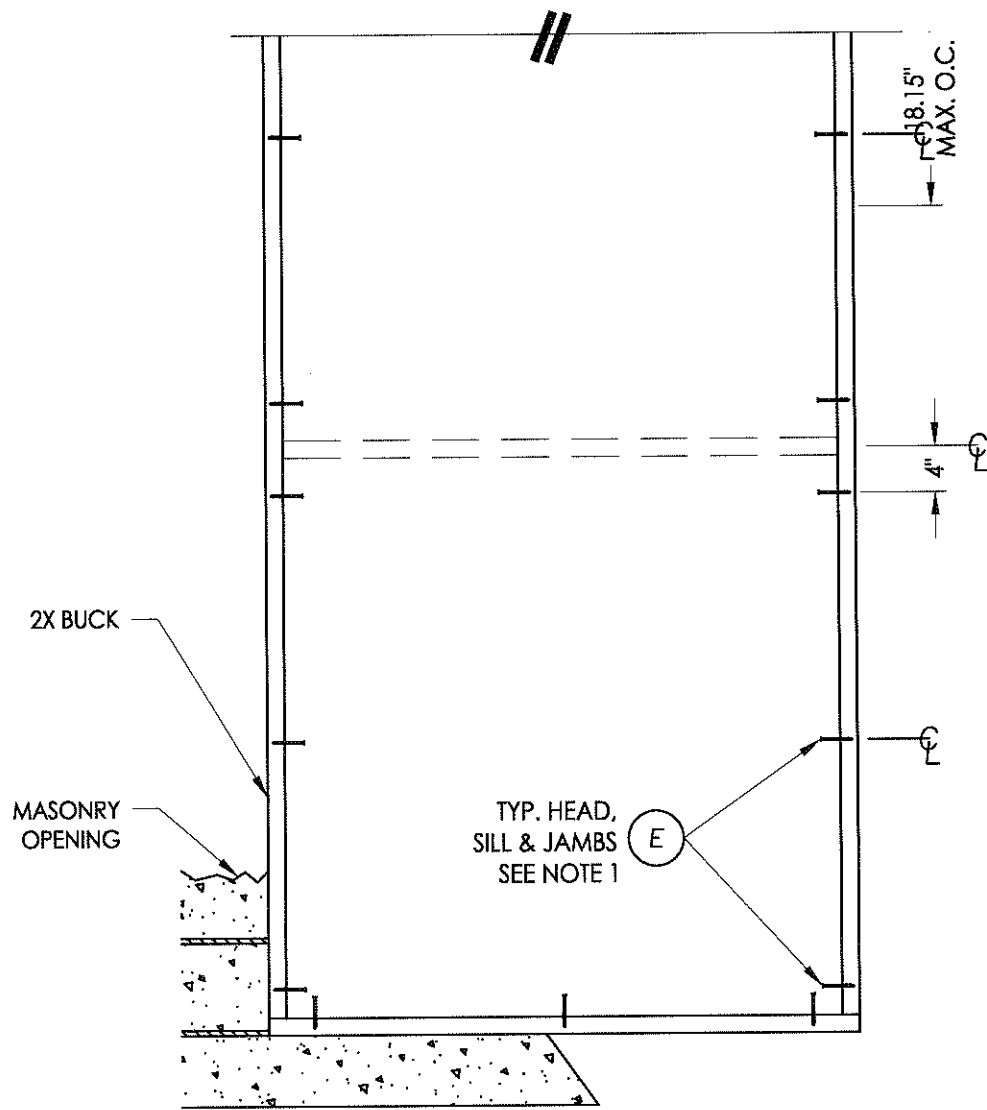
Documents Prepared By: **RW BUILDING CONSULTANTS, INC.**
 P.O. Box 230 Valrico FL 33595
 Phone No.: 813.659.9197
 Florida Board of Professional Engineers
 Certificate Of Authorization No. 9813
 Wendell W. Hapney, P.E. No. 54158

PRODUCT: CLAD VENT AWNING WINDOW "NON-IMPACT"
 PART OR ASSEMBLY: BUCK & FRAME ANCHORING - HORIZONTAL

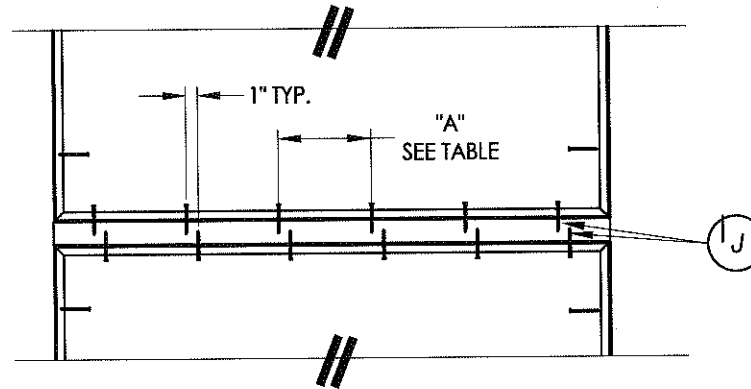
NO.	DATE	BY	REVISIONS

DATE: 5/7/08
 SCALE: N.T.S.
 DWG. BY: JK
 CHK. BY: WWH
 DRAWING NO.: FL-8554.2
 SHEET 8 OF 11

© 2008 R.W. BUILDING CONSULTANTS INC.

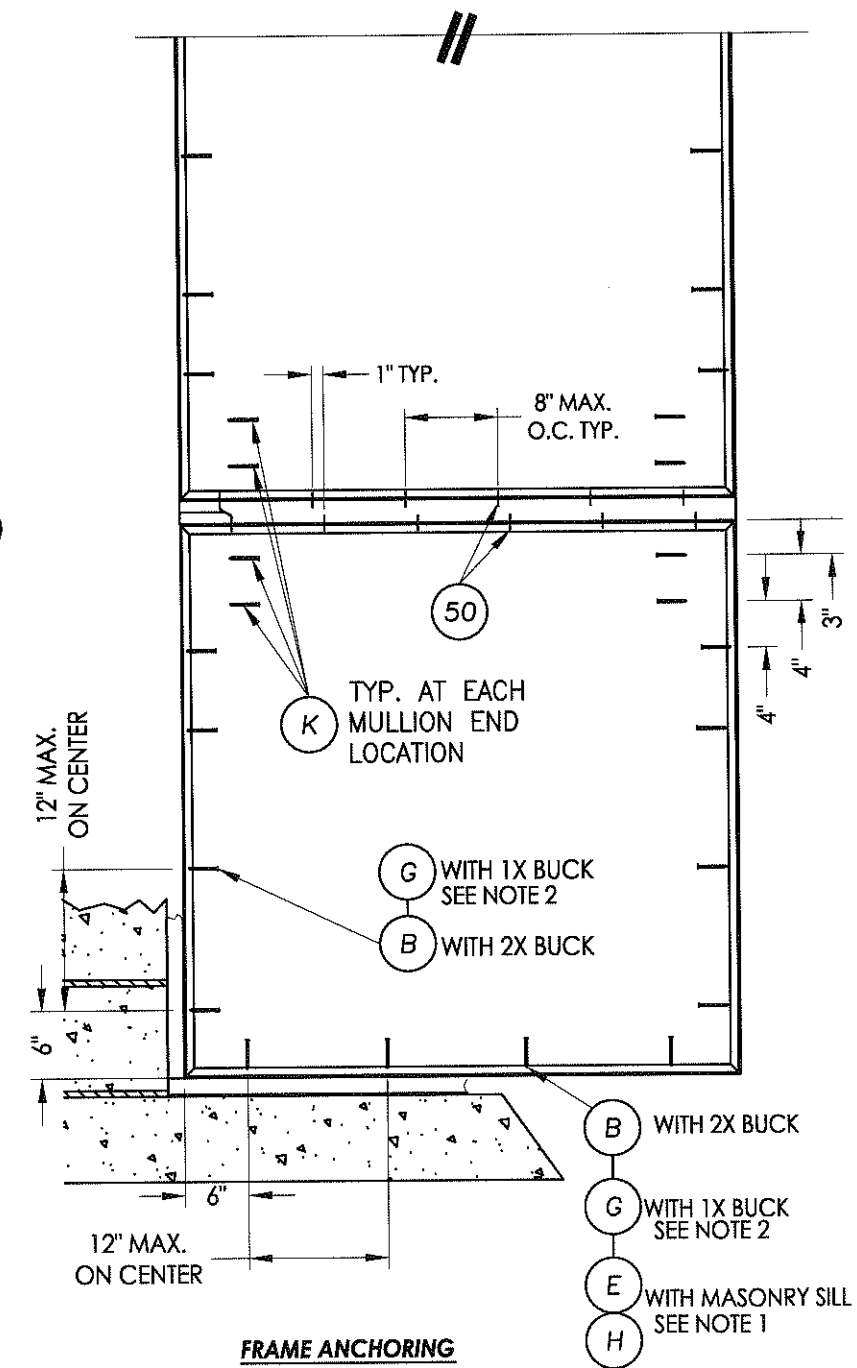


BUCK ANCHORING



DP	"A" DIMENSION
UP TO 40 PSF	12" MAX. O.C.
UP TO 60 PSF	10" MAX. O.C.
UP TO 70 PSF	8" MAX. O.C.

OPTIONAL MULLION ASSEMBLY FASTENING
 Substituting #8 X 2-1/2" PFH wood Screws for the corrugated fasteners



FRAME ANCHORING

NOTES:

- 1/4" Elco Concrete screws anchoring 2x buck require a minimum 1" clearance to masonry edges, a 1-1/4" minimum embedment and a minimum 4" clearance to adjacent concrete screws. Substitution of equal concrete screws from a different supplier may have different edge distance and center distance requirements. Concrete screw locations at the corners, mullion and centerline locations may be adjusted to maintain the minimum edge distance to mortar joints. If Concrete screw locations noted as "MAX. ON CENTER" must be adjusted to maintain the minimum edge distance to mortar joints, additional Concrete screws may be required to ensure the maximum on center dimension is not exceeded.
- 1/4" ITW concrete screws anchoring frame and/or sill require a minimum 2-1/2" clearance to masonry edges, a 1-1/4" minimum embedment and a minimum 3" clearance to adjacent concrete screws. Substitution of equal concrete screws from a different supplier may have different edge distance and center distance requirements. Concrete screw locations at the corners, mullion and centerline locations may be adjusted to maintain the minimum edge distance to mortar joints. If Concrete screw locations noted as "MAX. ON CENTER" must be adjusted to maintain the minimum edge distance to mortar joints, additional Concrete screws may be required to ensure the maximum on center dimension is not exceeded.

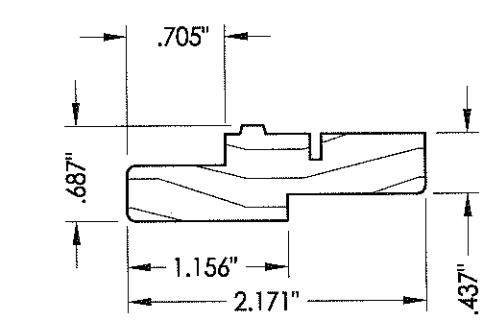
Documents Prepared By:

RW BUILDING CONSULTANTS, INC.
 P.O. Box 230 Valrico FL 33595
 Phone No.: 813.659.9197
 Florida Board of Professional Engineers
 Certificate Of Authorization No. 9813
Wendell W. Haney 9-8-08
 Wendell W. Haney, P.E. No. 54158

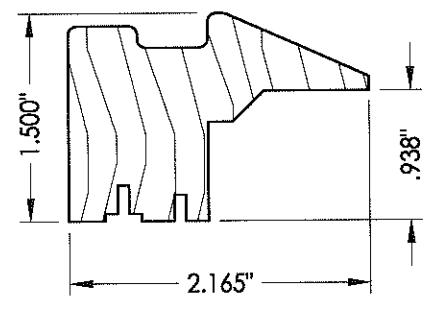
PRODUCT: CLAD VENT AWNING WINDOW "NON-IMPACT"
 PART OR ASSEMBLY: BUCK & FRAME ANCHORING - VERTICAL

NO.	DATE	BY

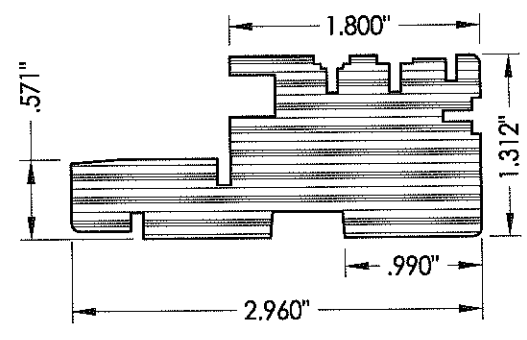
DATE: 5/7/08
 SCALE: N.T.S.
 DWG. BY: JK
 CHK. BY: WWH
 DRAWING NO.: FL-8554.2
 SHEET 9 OF 11



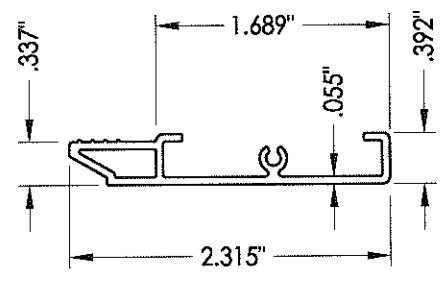
22 STOP COVER



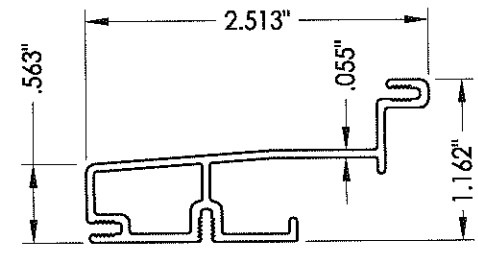
20 SILL COVER



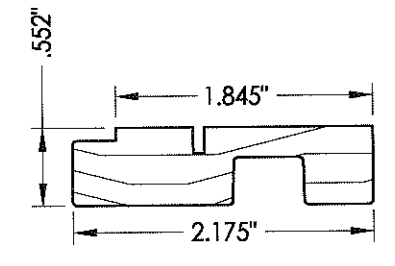
5 HEAD, SILL & JAMB
Frame Member



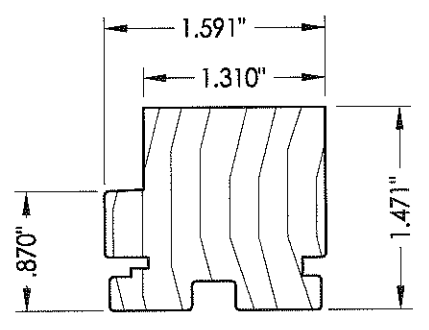
10 SASH CLADDING



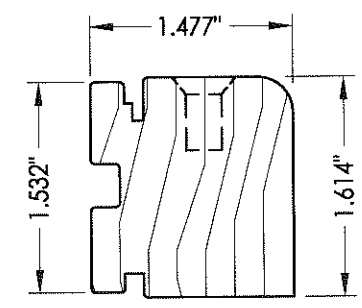
6 FRAME COVER CLADDING



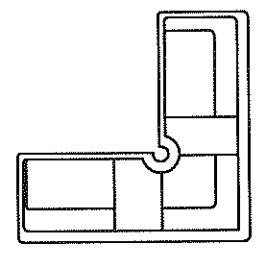
21 HEAD STOP
Sash Stop



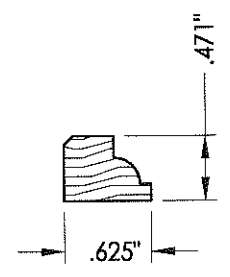
24 SASH STILE



14 SASH RAIL



33 FRAME CORNER KEY



13 GLASS STOP

Documents Prepared By:

RW BUILDING CONSULTANTS, INC.
P.O. Box 230 Valrico, FL 33595
Phone No.: 813.659.9197
Florida Board of Professional Engineers
Certificate Of Authorization No. 9813
Wendell W. Haney 9-8-08
Wendell W. Haney, P.E. No. 54158

PRODUCT:
CLAD VENT AWNING
WINDOW "NON-IMPACT"
PART OR ASSEMBLY:
COMPONENTS

NO	DATE	REVISIONS	BY

DATE: 5/7/08
SCALE: N.T.S.
DWG. BY: JK
CHK. BY: WWH
DRAWING NO.: FL-8554.2
SHEET 10 OF 11

