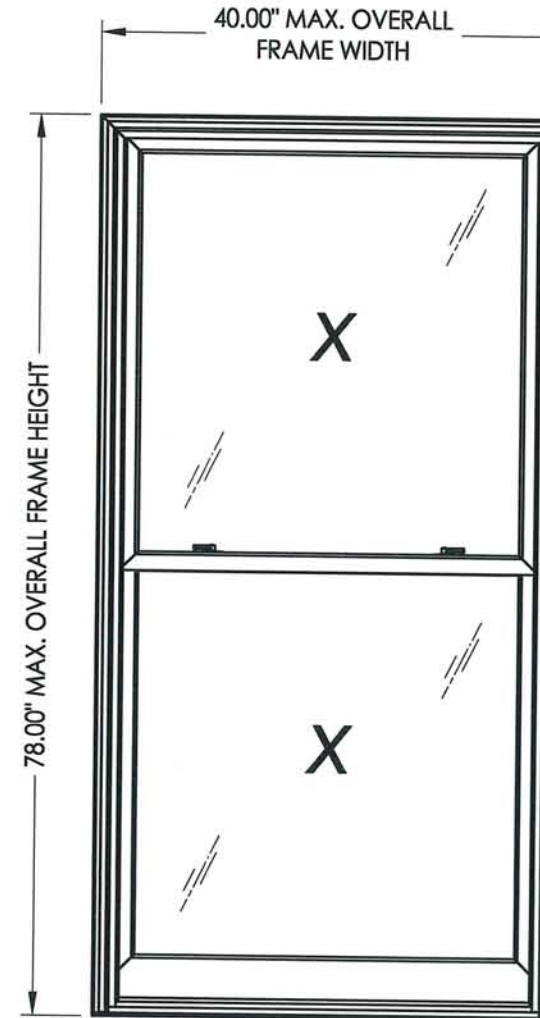


**SERIES T-7  
 CLAD TALON DOUBLE HUNG  
 VENT WINDOW  
 "HARBOR MASTER"  
 "IMPACT"**

GENERAL NOTES

1. This product has been evaluated and is in compliance with the 2007 Florida Building Code (FBC) structural requirements including the "High Velocity Hurricane Zone" (HVHZ).
2. Product anchors shall be as listed and spaced as shown on details. Anchor embedment to base material shall be beyond wall dressing or stucco.
3. When used in the "HVHZ" this product complies with section 1626 of the Florida Building Code and does not require an impact resistant covering.
4. When used in areas outside of the "HVHZ" requiring wind borne debris protection this product complies with Section 1609.1.2 of the 2007 FBC and does not require an impact resistant covering. This product meets missile level "D" and includes Wind Zone 4 as defined in ASTM E1996.
5. For 2x stud framing construction, anchoring of these units shall be the same as that shown for 2x buck masonry construction.
6. Site conditions that deviate from the details of this drawing require further engineering analysis by a licensed engineer or registered architect.
7. This product meets water infiltration requirements for "HVHZ".



OVERALL FRAME DIMENSION	OVERALL D.L.O. DIMENSION	GLASS TYPE	DESIGN PRESSURE (PSF)	
			POSITIVE	NEGATIVE
40.00" x 78.00"	33.00" x 33.83"	G1	+55.0	-65.0

TABLE OF CONTENTS	
SHEET #	DESCRIPTION
1	Typical elevation, design pressures, & general notes
2	Glazing details
3	Vertical & horizontal cross sections
4	Vertical cross sections
5	Buck & frame anchoring
6	Components
7	Bill of materials

Documents Prepared By: **RW** BUILDING CONSULTANTS, INC.  
 P.O. Box 230 Valrico FL 33595  
 Phone No.: 813.659.9197  
 Florida Board of Professional Engineers  
 Certificate Of Authorization No. 9813  
*LFS* 10-30-08  
 Lyndon F. Schmidt, P.E. No. 43409

PRODUCT: EAGLE HUNG WINDOW  
 DOUBLE HUNG WINDOW  
 PART OR ASSEMBLY: TYPICAL ELEVATION, DESIGN PRESSURES & GENERAL NOTES

NO.	DATE	BY	REVISIONS

DATE: 10/22/08  
 SCALE: N.T.S.  
 DWG. BY: AL  
 CHK. BY: LFS  
 DRAWING NO.: FL-10239.3  
 SHEET 1 OF 7

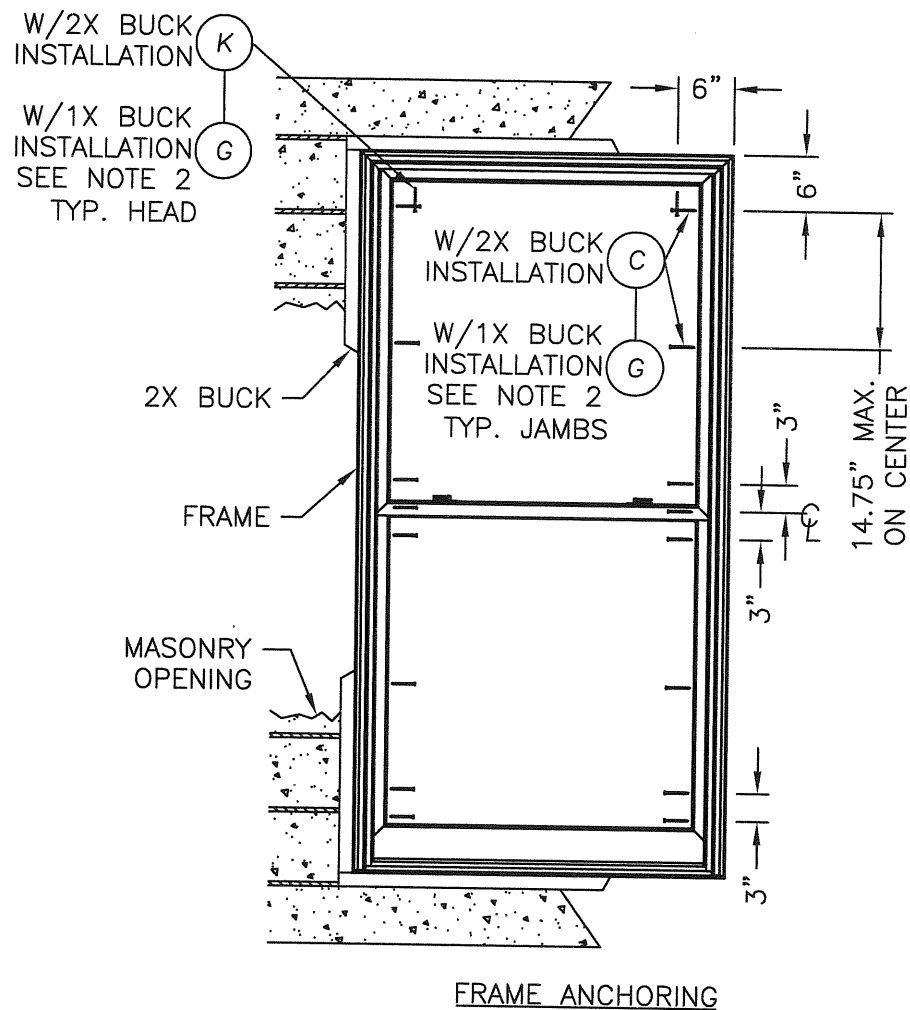
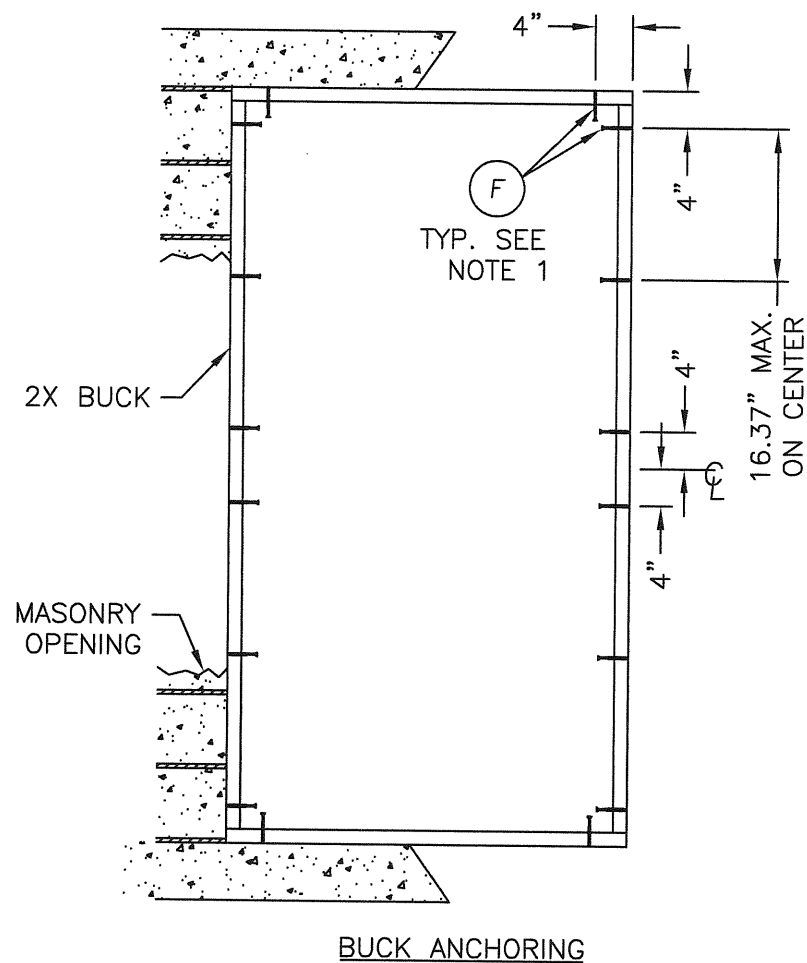
© 2008 R.W. BUILDING CONSULTANTS INC.

R:\VA - Projects\Project Folders\Proj 1301-1400\PF 1346\D. RWBC Drawings\FL-10239\FL-10239.3-4.dwg, FL-10239.3









**NOTES:**

1. 1/4" Elco concrete screws anchoring 2x buck require a minimum 1" clearance to masonry edges, a 1-1/4" minimum embedment and a minimum 4" clearance to adjacent concrete screws. Substitution of equal concrete screws from a different supplier may have different edge distance and center distance requirements. Concrete screw locations at the corners and at meeting rail centerline locations may be adjusted to maintain the minimum edge distance to mortar joints. If concrete screw locations noted as "MAX. ON CENTER" must be adjusted to maintain the minimum edge distance to mortar joints, additional concrete screws may be required to ensure the maximum on center dimension is not exceeded.
2. 1/4" ITW concrete screws anchoring frame and/or sill require a minimum 2-1/2" clearance to masonry edges, a 1-1/4" minimum embedment and a minimum 3" clearance to adjacent concrete screws. Substitution of equal concrete screws from a different supplier may have different edge distance and center distance requirements. Concrete screw locations at the corners and at meeting rail centerline locations may be adjusted to maintain the minimum edge distance to mortar joints. If concrete screw locations noted as "MAX. ON CENTER" must be adjusted to maintain the minimum edge distance to mortar joints, additional concrete screws may be required to ensure the maximum on center dimension is not exceeded.

Documents Prepared By: **R.W. BUILDING CONSULTANTS, INC.**  
 P.O. Box 230 Valrico FL 33595  
 Phone No.: 813.659.9197  
 Florida Board of Professional Engineers  
 Certificate Of Authorization No. 9813  
 Lyndon F. Schmidt, P.E. No. 43409

PRODUCT: **EAGLE HUNG WINDOW**  
 PART OR ASSEMBLY: **BUCK & FRAME ANCHORING**

NO.	DATE	BY	REVISIONS

DATE: 10/22/08  
 SCALE: N.T.S.  
 DWG. BY: AL  
 CHK. BY: LFS  
 DRAWING NO.: FL-10239.3  
 SHEET 5 OF 7

© 2008 R.W. BUILDING CONSULTANTS INC.

K:\A - Projects\Project Folders\Proj 1301-1400\PT-1346\D. RWBC Drawings\FL-10239.3-4.dwg, 5



